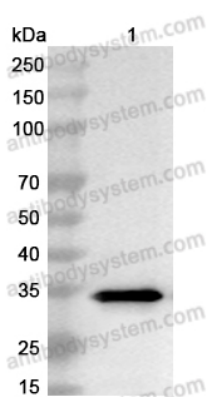


Anti-Staphylococcus aureus Alpha-toxin/hly Polyclonal Antibody

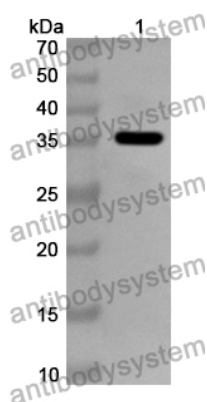
Summary

Catalog No.	PXX00101
Host species	Rabbit
Tested applications	ELISA: 1:4000-1:8000, IHC: 1:50-1:200, WB: 1:1000-1:4000
Species reactivity	Staphylococcus aureus
Immunogen	E. coli - derived recombinant Staphylococcus aureus A29L (Ala27-Asn319).
Form	Liquid
Storage buffer	0.01M PBS, pH 7.4, 50% Glycerol, 0.05% Proclin 300.
Concentration	1.16 mg/ml
Clonality	Polyclonal
Isotype	IgG
Applications	ELISA, WB
Target	Alpha-hemolysin, hly, Alpha-HL, Alpha-toxin, hla
Purification	Purified by antigen affinity column.
Stability and Storage	Use a manual defrost freezer and avoid repeated freeze thaw cycles. Store at 2 to 8°C for frequent use. Store at -20 to -80°C for twelve months from the date of receipt.
Note	For research use only.

Data Image



Western Blot



Western Blot

Recombinant Protein were subjected to SDS PAGE followed by western blot with Staphylococcus aureus Alpha-toxin/hly antibody (PXX00101) at 1ug/ml.

Lane 1: Recombinant Staphylococcus aureus Alpha-toxin/hly protein([YXX00101](#))

Second Ab: Goat Anti-Rabbit IgG H&L Polyclonal antibody, HRP ([PTB96431](#)) at 0.1 µg/mL.

Predict MW: 33 kDa

Observed MW: 33 kDa

Recombinant Protein lysates were subjected to SDS PAGE followed by western blot with Alpha-toxin/hly antibody (PXX00101) at 1 µg/ml.

Lane 1: Recombinant Protein

Second Ab: Goat Anti-Rabbit IgG H&L Polyclonal antibody, HRP (PTB96431) at 0.1 µg/mL.

Predict MW: 36 kDa

Observed MW: 36 kDa