

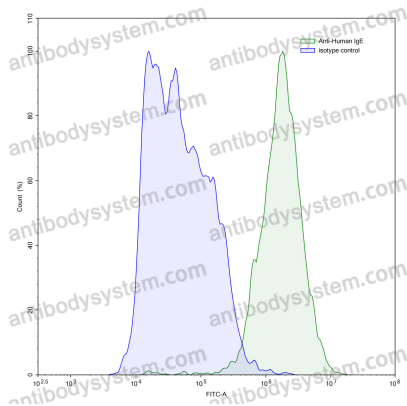
# Anti-Human IgE/IGHE Antibody (SAA0343)

## Summary

---

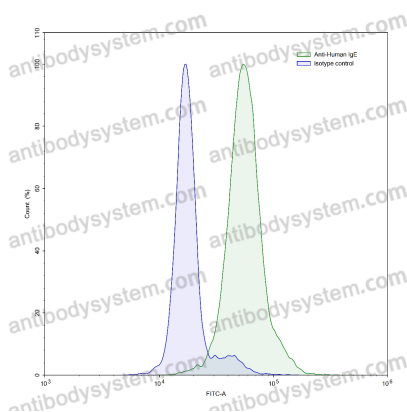
<b>Catalog No.</b>	RHJ92703
<b>Clone ID</b>	SAA0343
<b>Host species</b>	Mouse
<b>Species reactivity</b>	Human
<b>Form</b>	Liquid
<b>Storage buffer</b>	0.01M PBS, pH 7.4.
<b>Concentration</b>	1 mg/ml
<b>Purity</b>	>95% as determined by SDS-PAGE.
<b>Clonality</b>	Monoclonal
<b>Isotype</b>	IgG2a, kappa
<b>Applications</b>	ELISA, FCM
<b>Target</b>	Immunoglobulin heavy constant epsilon, Ig epsilon chain C region, Ig epsilon chain C region ND, IGHE
<b>Purification</b>	Protein A/G purified from cell culture supernatant.
<b>Endotoxin level</b>	Please contact with the lab for this information.
<b>Accession</b>	P01854
<b>Stability and Storage</b>	Use a manual defrost freezer and avoid repeated freeze-thaw cycles. Store at 4°C short term (1-2 weeks). Store at -20°C 12 months. Store at -80°C long term.
<b>Note</b>	For research use only.

## Data Image



Flow-cytometry

Flow-cytometry using anti-human IgE antibody. IgE Transfected CHO cells were stained with an irrelevant antibody (Blue Histogram) or an anti-human IgE antibody monoclonal antibody (Catalog # RHJ92703, Green Histogram) at a concentration of 5  $\mu$ g/ml for 30 mins at RT. After washing, bound antibody was detected using a FITC conjugated goat anti-mouse antibody (Catalog # PMB96441) and cells analysed on a NovoCyt Flow Cytometer.



Flow-cytometry

Flow-cytometry using anti-human IgE antibody. Human peripheral blood lymphocytes were stained with an irrelevant antibody (Blue Histogram) or an anti-human IgE antibody monoclonal antibody (Catalog # RHJ92703, Green Histogram) at a concentration of 5  $\mu$ g/ml for 30 mins at RT. After washing, bound antibody was detected using a FITC conjugated goat anti-mouse antibody (Catalog # PMB96441) and cells analysed on a NovoCyt Flow Cytometer.