

# Research Grade Gilvetmab

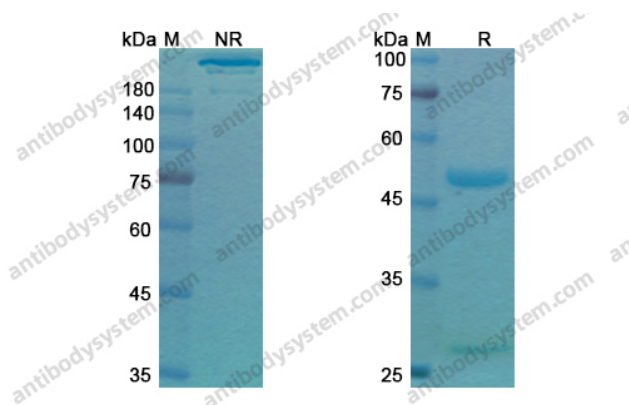
## Summary

---

|                              |   |
|------------------------------|---|
| <b>Catalog No.</b>           | DQH02201  |
| <b>Alternative Names</b>     | AH-PD1, CAS: 1808081-43-7   |
| <b>Clone ID</b>              | Gilvetmab   |
| <b>Host species</b>          | Caninized   |
| <b>Species reactivity</b>    | Dog   |
| <b>Form</b>                  | Liquid  |
| <b>Storage buffer</b>        | 0.01M PBS, pH 7.4.  |
| <b>Concentration</b>         | 1.04 mg/ml  |
| <b>Purity</b>                | >95% as determined by SDS-PAGE.   |
| <b>Clonality</b>             | Monoclonal  |
| <b>Isotype</b>               | IgG2-kappa  |
| <b>Applications</b>          | Research Grade Biosimilar   |
| <b>Target</b>                | CD279/PDCD1/PD1   |
| <b>Purification</b>          | Protein A/G purified from cell culture supernatant.   |
| <b>Endotoxin level</b>       | Please contact with the lab for this information.   |
| <b>Expression system</b>     | Mammalian Cells   |
| <b>Accession</b>             | E2RPS2  |
| <b>Stability and Storage</b> | Use a manual defrost freezer and avoid repeated freeze-thaw cycles.<br>Store at 4°C short term (1-2 weeks). Store at -20°C 12 months. Store at -80°C long term. |

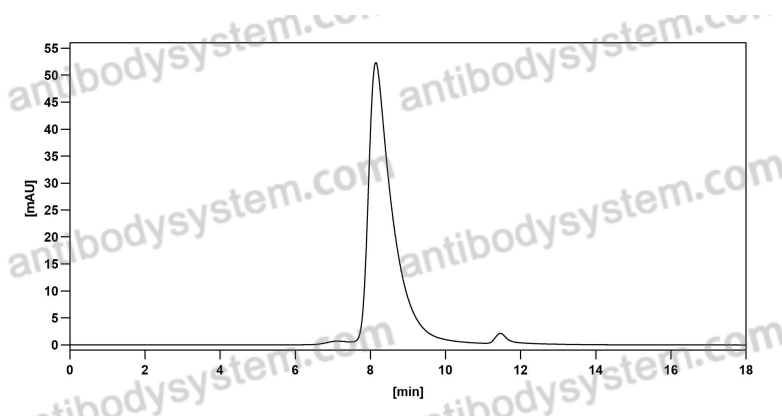
**Note**

For research use only. Not suitable for clinical or therapeutic use.

**Data Image**

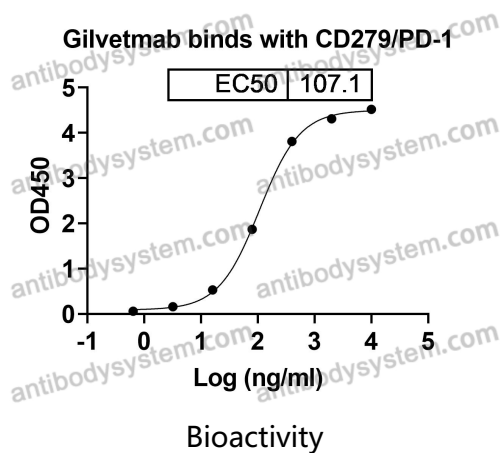
SDS PAGE for Gilvetmab

SDS-PAGE



The purity of this product is &gt;95% as determined by SEC-HPLC.

SEC-HPLC



Detects Dog CD279 in indirect ELISAs.