

Recombinant Human CD299/CLEC4M Protein, N-Fc

Summary

Catalog No.	EHJ56001
Alternative Names	DC-SIGNR, DC-SIGN2, CLEC4M, DC-SIGN-related protein, C-type lectin domain family 4 member M, CD299, L-SIGN, CD209L, Liver/lymph node-specific ICAM-3-grabbing non-integrin, CD209L1, Dendritic cell-specific ICAM-3-grabbing non-integrin 2, CD209 antigen-like protein 1
Form	Lyophilized
Storage buffer	Lyophilized from a solution in PBS pH 7.4, 1mM EDTA, 4% Trehalose, 1% Mannitol.
Purity	>90% as determined by SDS-PAGE.
Applications	ELISA, Immunogen, SDS-PAGE, WB, Bioactivity testing in progress
Endotoxin level	Please contact with the lab for this information.
Expression system	Mammalian Cells
Accession	Q9H2X3
Protein length	Ser78-Glu399
Nature	Recombinant
Predicted molecular weight	64.83 kDa
Stability and Storage	Use a manual defrost freezer and avoid repeated freeze thaw cycles. Store at 2 to 8°C for frequent use. Store at -20 to -80°C for twelve months from the date of receipt.
Reconstitution	Reconstitute in sterile water for a stock solution. A copy of datasheet will be provided with the products, please refer to it for details.

Recombinant Proteins & Antibodies

Species	Homo sapiens (Human)
Shipping	In general, proteins are provided as lyophilized powder/frozen liquid. They are shipped out with dry ice/blue ice unless customers require otherwise.
Note	For research use only.

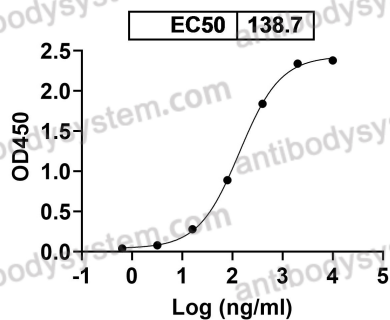
Data Image



SDS-PAGE

SDS PAGE for recombinant Human CD299/CLEC4M Protein

Anti-Human CD299/CLEC4M Antibody (16E7#)
binds with Human CD299/CLEC4M



Bioactivity

Detects Human CD299/CLEC4M Antibody (16E7#) in indirect ELISAs.