

# Recombinant Human MUC16/CA125 Protein, C-His

## Summary

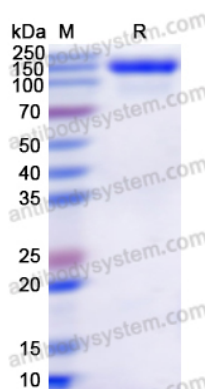
---

<b>Catalog No.</b>	EHJ31001
<b>Alternative Names</b>	Mucin-16, CA-125, Ovarian carcinoma antigen CA125, CA125, MUC-16, Ovarian cancer-related tumor marker CA125, MUC16
<b>Form</b>	Lyophilized
<b>Storage buffer</b>	Lyophilized from a solution in PBS pH 7.4, 5% Trehalose, 5% Mannitol.
<b>Purity</b>	>90% as determined by SDS-PAGE.
<b>Applications</b>	ELISA, Immunogen, SDS-PAGE, WB, Bioactivity testing in progress
<b>Endotoxin level</b>	Please contact with the lab for this information.
<b>Expression system</b>	Mammalian Cells
<b>Accession</b>	Q8WXI7
<b>Protein length</b>	Met13360-Gln14347
<b>Nature</b>	Recombinant
<b>Predicted molecular weight</b>	112.85 kDa
<b>Stability and Storage</b>	Use a manual defrost freezer and avoid repeated freeze thaw cycles. Store at 2 to 8°C for frequent use. Store at -20 to -80°C for twelve months from the date of receipt.
<b>Reconstitution</b>	Reconstitute in sterile water for a stock solution.
<b>Species</b>	Homo sapiens (Human)
<b>Shipping</b>	In general, proteins are provided as lyophilized powder/frozen liquid. They are shipped out with dry ice/blue ice unless customers require otherwise.

Note

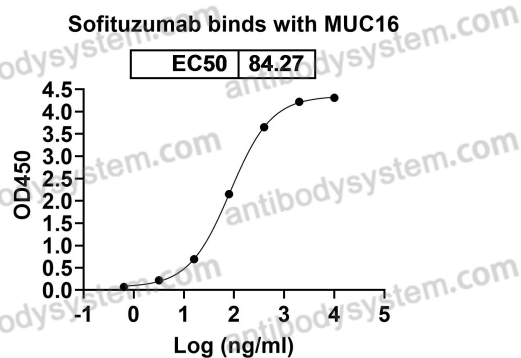
For research use only.

## Data Image



SDS-PAGE

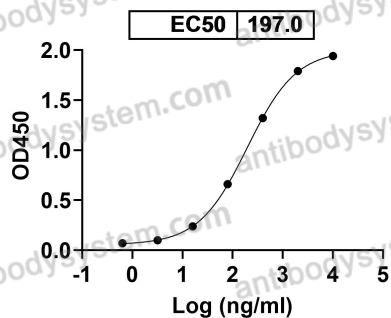
SDS PAGE for Recombinant Human MUC16/CA125 Protein



Bioactivity

Detects Sofituzumab in indirect ELISAs.

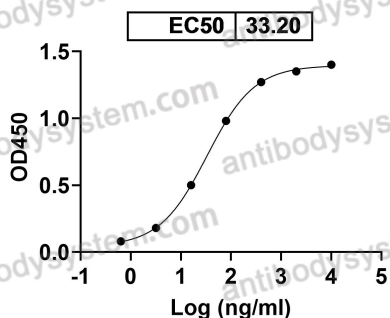
Anti-Human MUC16/CA125 Antibody (SAA0160)  
binds with MUC16



Bioactivity

Detects Human MUC16/CA125 Antibody (SAA0160)  
in indirect ELISAs.

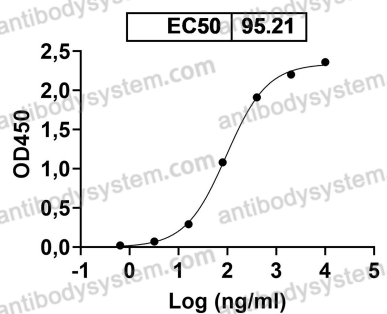
Anti-Human MUC16/CA125 Antibody  
(SAA0161) binds with MUC16



Bioactivity

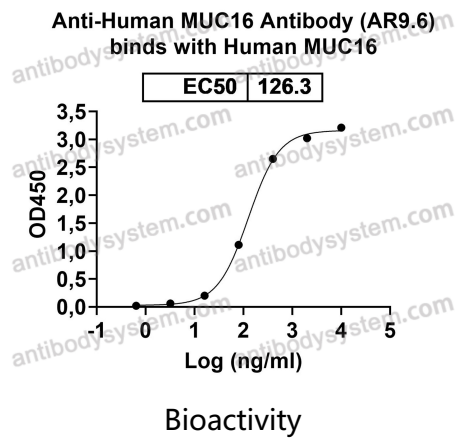
Detects Human MUC16/CA125 Antibody (SAA0161)  
in indirect ELISAs.

Ubamatamab binds with MUC16



Bioactivity

Detects Ubamatamab in indirect ELISAs.



Detects Human MUC16 Antibody (AR9.6) in indirect ELISAs.