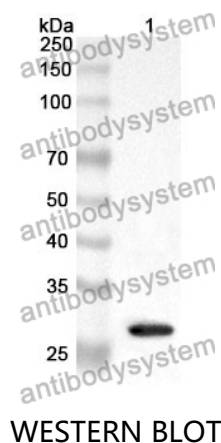


Anti-ABCA1 Polyclonal Antibody

Summary

Catalog No.	PHB67101
Host species	Rabbit
Tested applications	ELISA: 1:4000-1:8000, IHC: 1:50-1:100, WB: 1:1000-1:4000
Species reactivity	Human, Mouse, Rat
Immunogen	E. coli - derived recombinant Human ABCA1 (Ser45-Glu271).
Form	Liquid
Storage buffer	0.01M PBS, pH 7.4, 50% Glycerol, 0.05% Proclin 300.
Clonality	Polyclonal
Isotype	IgG
Applications	ELISA, IHC, WB
Target	ATP-binding cassette transporter 1,ATP-binding cassette sub-family A member 1,Phospholipid-transporting ATPase ABCA1,ABC-1,ABCA1,ATP-binding cassette 1,Cholesterol efflux regulatory protein,ABC1,CERP
Purification	Purified by antigen affinity column.
Accession	O95477
Stability and Storage	Use a manual defrost freezer and avoid repeated freeze thaw cycles. Store at 2 to 8°C for frequent use. Store at -20 to -80°C for twelve months from the date of receipt.
Note	For research use only.

Data Image



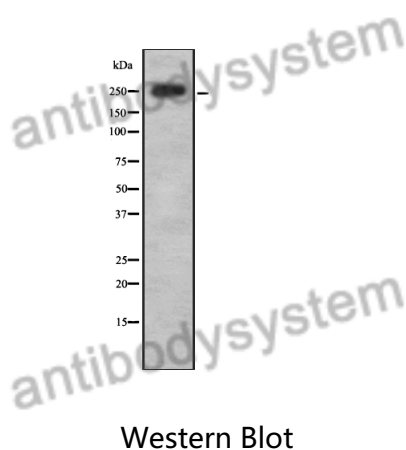
Recombinant Protein lysates were subjected to SDS PAGE followed by western blot with ABCA1 antibody (PHB67101) at 1 µg/ml.

Lane 1: Recombinant protein

Second Ab: Goat Anti-Rabbit IgG H&L Polyclonal antibody, HRP (PTB96431) at 0.1 µg/mL.

Predict MW: 28 kDa

Observed MW: 28 kDa



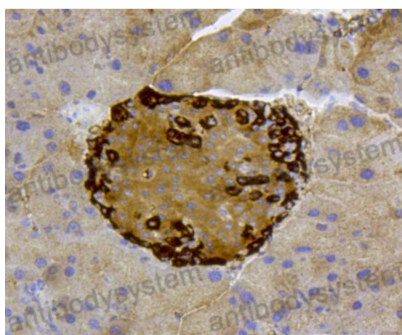
Various lysates were subjected to SDS PAGE followed by western blot with ABCA1 antibody (PHB67101) at 1 µg/ml.

Lane 1: MCF7

Second Ab: Goat Anti-Rabbit IgG H&L Polyclonal antibody, HRP (PTB96431) at 0.1 µg/mL.

Predict MW: 254 kDa

Observed MW: 254 kDa



Immunohistochemical

Immunohistochemical analysis of mouse pancreas stained for ABCA1 with PHB67101.