

Recombinant Human CD218a/IL18R1 Protein, C-Fc

Summary

| | |
|-----------------------------------|---|
| Catalog No. | EHG55001 |
| Alternative Names | CD218a, IL-18R1, IL18R1, CDw218a, IL-18R-alpha, IL-18R-1, Interleukin-18 receptor 1, IL-18Ralpha, IL1 receptor-related protein, CD218 antigen-like family member A, IL-1Rrp, IL1RRP, IL1R-rp, Interleukin-18 receptor alpha |
| Form | Lyophilized |
| Storage buffer | Lyophilized from a solution in PBS pH 7.4, 1mM EDTA, 4% Trehalose, 1% Mannitol. |
| Purity | >90% as determined by SDS-PAGE. |
| Applications | ELISA, Immunogen, SDS-PAGE, WB, Bioactivity testing in progress |
| Endotoxin level | Please contact with the lab for this information. |
| Expression system | Mammalian Cells |
| Accession | Q13478 |
| Protein length | Met1-Arg329 |
| Nature | Recombinant |
| Predicted molecular weight | 64.23 kDa |
| Stability and Storage | Use a manual defrost freezer and avoid repeated freeze thaw cycles. Store at 2 to 8°C for frequent use. Store at -20 to -80°C for twelve months from the date of receipt. |
| Reconstitution | Reconstitute in sterile water for a stock solution. A copy of datasheet will be provided with the products, please refer to it for details. |
| Species | Homo sapiens (Human) |

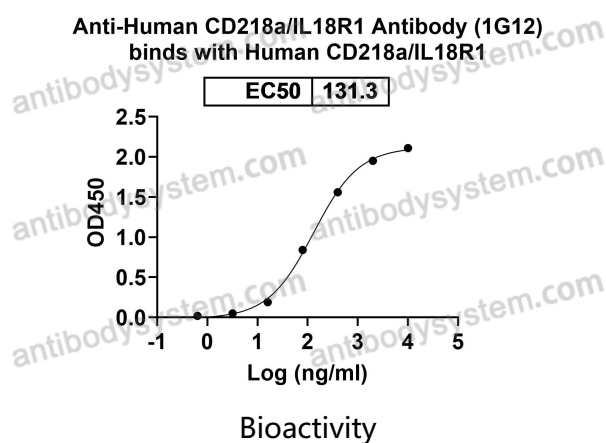
Recombinant Proteins & Antibodies

Shipping

In general, proteins are provided as lyophilized powder/frozen liquid. They are shipped out with dry ice/blue ice unless customers require otherwise.

Note

For research use only.

Data Image

Detects Human CD218a/IL18R1 Antibody (1G12) in indirect ELISAs.