

# Recombinant Human CD252/TNFSF4 Protein, N-Fc

## Summary

---

<b>Catalog No.</b>	EHD58801
<b>Alternative Names</b>	CD252, OX40L, TXGP1, OX40 ligand, Glycoprotein Gp34, TAX transcriptionally-activated glycoprotein 1, TNFSF4, Tumor necrosis factor ligand superfamily member 4
<b>Form</b>	Lyophilized
<b>Storage buffer</b>	Lyophilized from a solution in PBS pH 7.4, 1mM EDTA, 4% Trehalose, 1% Mannitol.
<b>Purity</b>	>90% as determined by SDS-PAGE.
<b>Applications</b>	ELISA, Immunogen, SDS-PAGE, WB, Bioactivity testing in progress
<b>Endotoxin level</b>	Please contact with the lab for this information.
<b>Expression system</b>	Mammalian Cells
<b>Accession</b>	P23510
<b>Protein length</b>	Gln51-Leu183
<b>Nature</b>	Recombinant
<b>Predicted molecular weight</b>	43.26 kDa
<b>Stability and Storage</b>	Use a manual defrost freezer and avoid repeated freeze thaw cycles. Store at 2 to 8°C for frequent use. Store at -20 to -80°C for twelve months from the date of receipt.
<b>Reconstitution</b>	Reconstitute in sterile water for a stock solution. A copy of datasheet will be provided with the products, please refer to it for details.
<b>Species</b>	Homo sapiens (Human)

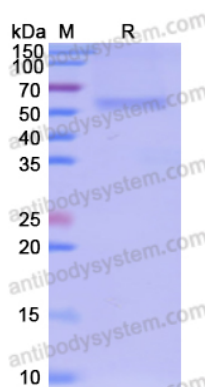
## Shipping

In general, proteins are provided as lyophilized powder/frozen liquid. They are shipped out with dry ice/blue ice unless customers require otherwise.

## Note

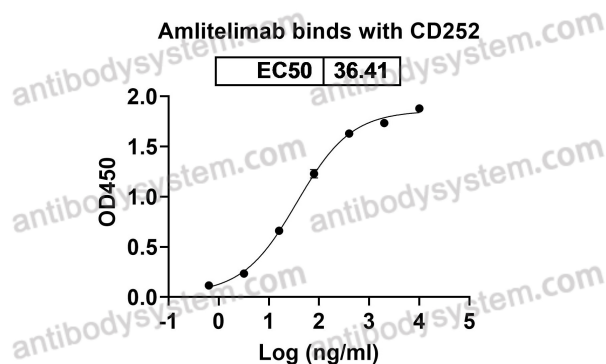
For research use only.

## Data Image



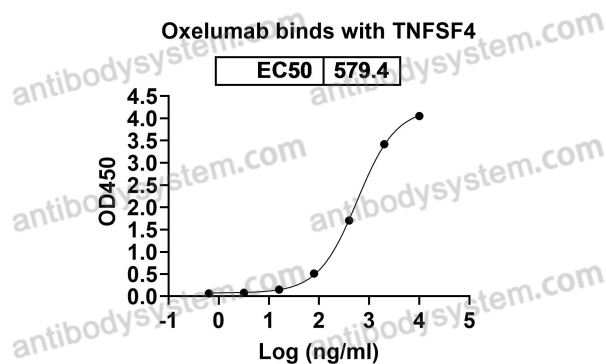
SDS-PAGE

SDS PAGE for CD252/TNFSF4



Bioactivity

Detected Amlitelimab in indirect ELISAs.



Bioactivity

Detects Oxelumab in indirect ELISAs.