

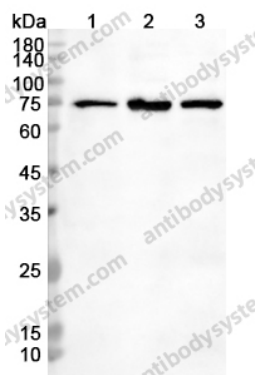
# Anti-TOMM70 Polyclonal Antibody

## Summary

---

|                              |   |
|------------------------------|---|
| <b>Catalog No.</b>           | PHB45101  |
| <b>Host species</b>          | Rabbit  |
| <b>Tested applications</b>   | ELISA: 1:4000-1:8000, IHC: 1:50-1:100, WB: 1:1000-1:4000  |
| <b>Species reactivity</b>    | Human, Mouse, Rat   |
| <b>Immunogen</b>             | E. coli - derived recombinant Human TOMM70 (Leu333-Leu608).   |
| <b>Form</b>                  | Liquid  |
| <b>Storage buffer</b>        | 0.01M PBS, pH 7.4, 50% Glycerol, 0.05% Proclin 300.   |
| <b>Clonality</b>             | Polyclonal  |
| <b>Isotype</b>               | IgG   |
| <b>Applications</b>          | ELISA, IHC, WB  |
| <b>Target</b>                | TOM70, Translocase of outer membrane 70 kDa subunit, Mitochondrial import receptor subunit TOM70, Mitochondrial precursor proteins import receptor, KIAA0719, TOMM70A, TOMM70, Translocase of outer mitochondrial membrane protein 70 |
| <b>Purification</b>          | Purified by antigen affinity column.  |
| <b>Accession</b>             | O94826  |
| <b>Stability and Storage</b> | Use a manual defrost freezer and avoid repeated freeze thaw cycles. Store at 2 to 8°C for frequent use. Store at -20 to -80°C for twelve months from the date of receipt.   |
| <b>Note</b>                  | For research use only.  |

## Data Image



Western blot

Various lysates were subjected to SDS PAGE followed by western blot with TOMM70 antibody (PHB45101) at 0.58µg/ml.

Lane 1: HeLa cell lysate

Lane 2: 293T cell lysate

Lane 3: HepG2 cell lysate

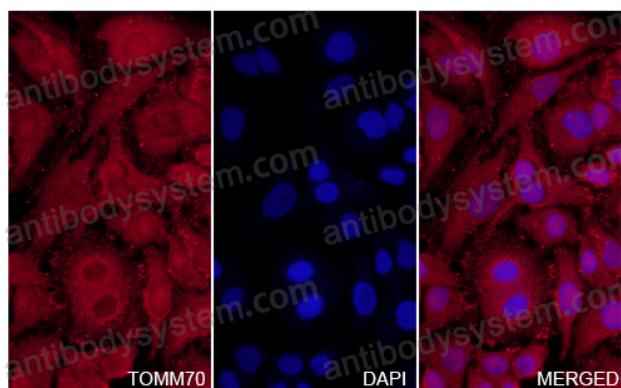
Second Ab: Goat Anti-Rabbit IgG H&L Polyclonal antibody, HRP (PTB96431) at 0.1 µg/mL.

Predict MW: 67 kDa

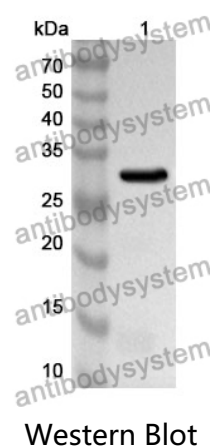
Observed MW: 70 kDa

TOMM70 in HeLa Cell Line.

The HeLa cells were fixed with 4% paraformaldehyde (20 min), and then blocked with 5% goat serum for 1h. And the cells were incubated for 2h at 37°C with TOMM70 (PHB45101) at 11.6 µg/ml. The section was then incubated with Goat Anti-Rabbit IgG (Alexa Fluor-594) preabsorbed at 1/100 dilution (Shown in red) for 1 hour at room temperature. Nuclear DNA was labelled with DAPI (shown in blue).



Immunocytochemistry/ Immunofluorescence



Recombinant Protein lysates were subjected to SDS PAGE followed by western blot with TOMM70 antibody (PHB45101) at 1 µg/ml.

Lane 1: Recombinant Protein

Second Ab: Goat Anti-Rabbit IgG H&L Polyclonal antibody, HRP (PTB96431) at 0.1 µg/mL.

Predict MW: 33 kDa

Observed MW: 33 kDa