

Recombinant Human CD107a/LAMP1 Protein, C-His

Summary

Catalog No.	EHC87701
Alternative Names	LAMP1, Lysosome-associated membrane protein 1, CD107 antigen-like family member A, CD107a, LAMP-1, Lysosome-associated membrane glycoprotein 1
Form	Lyophilized
Storage buffer	Lyophilized from a solution in PBS pH 7.4, 1mM EDTA, 4% Trehalose, 1% Mannitol.
Purity	>90% as determined by SDS-PAGE.
Applications	ELISA, Immunogen, SDS-PAGE, WB, Bioactivity testing in progress
Endotoxin level	Please contact with the lab for this information.
Expression system	Mammalian Cells
Accession	P11279
Protein length	Met1-Met382
Nature	Recombinant
Predicted molecular weight	42.25 kDa
Stability and Storage	Use a manual defrost freezer and avoid repeated freeze thaw cycles. Store at 2 to 8°C for frequent use. Store at -20 to -80°C for twelve months from the date of receipt.
Reconstitution	Reconstitute in sterile water for a stock solution. A copy of datasheet will be provided with the products, please refer to it for details.
Species	Homo sapiens (Human)

Recombinant Proteins & Antibodies

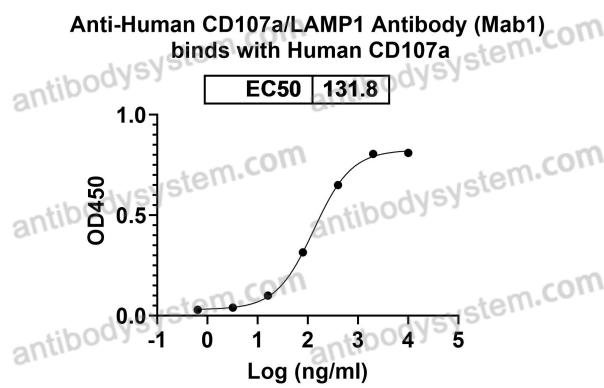
Shipping

In general, proteins are provided as lyophilized powder/frozen liquid. They are shipped out with dry ice/blue ice unless customers require otherwise.

Note

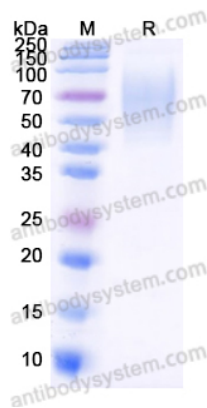
For research use only.

Data Image



Detects Human CD107a/LAMP1 Antibody (Mab1) in indirect ELISAs.

Bioactivity



SDS-PAGE for Recombinant Human CD107a/LAMP1 protein

SDS-PAGE