

# Recombinant Human CD1a & B2M Protein, C-His

## Summary

---

<b>Catalog No.</b>	EHC18701
<b>Alternative Names</b>	T-cell surface glycoprotein CD1a, CD1A, T-cell surface antigen T6/Leu-6, CD1a, hTa1 thymocyte antigen, Beta-2-microglobulin, B2M
<b>Form</b>	Lyophilized
<b>Storage buffer</b>	Lyophilized from a solution in PBS pH 7.4, 1mM EDTA, 4% Trehalose, 1% Mannitol.
<b>Purity</b>	>90% as determined by SDS-PAGE.
<b>Applications</b>	ELISA, Immunogen, SDS-PAGE, WB, Bioactivity testing in progress
<b>Endotoxin level</b>	Please contact with the lab for this information.
<b>Expression system</b>	Mammalian Cells
<b>Accession</b>	P06126 & P61769
<b>Protein length</b>	CD1a [Met1-Val300] & B2M [Met1-Met119]
<b>Nature</b>	Recombinant
<b>Predicted molecular weight</b>	48.66 kDa(NR);34.92 kDa & 13.68 kDa (R)
<b>Stability and Storage</b>	Use a manual defrost freezer and avoid repeated freeze thaw cycles. Store at 2 to 8°C for frequent use. Store at -20 to -80°C for twelve months from the date of receipt.
<b>Reconstitution</b>	Reconstitute in sterile water for a stock solution.
<b>Species</b>	Homo sapiens (Human)

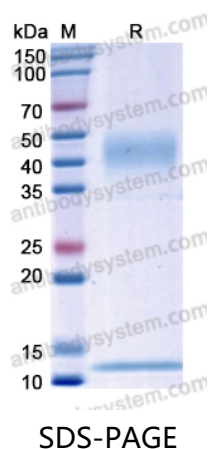
## Shipping

In general, proteins are provided as lyophilized powder/frozen liquid. They are shipped out with dry ice/blue ice unless customers require otherwise.

## Note

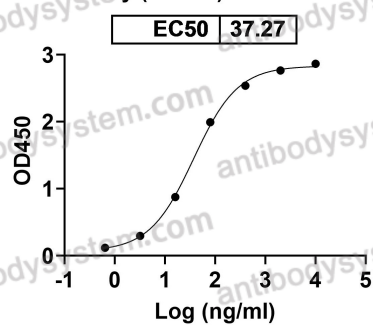
For research use only.

## Data Image



SDS PAGE for recombinant Human CD1a & B2M Protein

Anti-Human B2M/Beta-2-microglobulin Antibody (BBM.1) binds with B2M



Detects Human B2M/Beta-2-microglobulin Antibody (BBM.1) in indirect ELISAs.