

Recombinant mCherry Protein, N-His

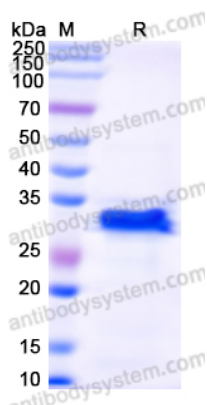
Summary

Catalog No.	YXX51301
Alternative Names	MCherry fluorescent protein, mCherry
Form	Lyophilized
Storage buffer	Lyophilized from a solution in PBS pH 7.4, 1mM EDTA, 4% Trehalose, 1% Mannitol.
Purity	>90% as determined by SDS-PAGE.
Applications	ELISA, Immunogen, SDS-PAGE, WB, Bioactivity testing in progress
Endotoxin level	Please contact with the lab for this information.
Expression system	E. coli
Accession	X5DSL3
Protein length	Met1-Lys236
Nature	Recombinant
Predicted molecular weight	28.89 kDa
Stability and Storage	Use a manual defrost freezer and avoid repeated freeze thaw cycles. Store at 2 to 8°C for frequent use. Store at -20 to -80°C for twelve months from the date of receipt.
Reconstitution	Reconstitute in sterile water for a stock solution.
Species	Anaplasma marginale
Shipping	In general, proteins are provided as lyophilized powder/frozen liquid. They are shipped out with dry ice/blue ice unless customers require otherwise.

Note

For research use only.

Data Image

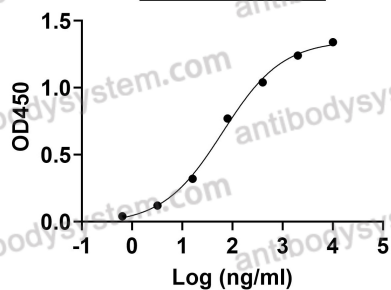


SDS-PAGE

SDS PAGE for Recombinant mCherry Protein

Anti-mCherry-plus® Tag Antibody (SAA0406)
binds with mCherry

EC50	63.70
------	-------



Bioactivity

Detects mCherry-plus® Tag Antibody (SAA0406) in indirect ELISAs.