

Anti-Human B2M/Beta-2-microglobulin Antibody (BBM.1)

Summary

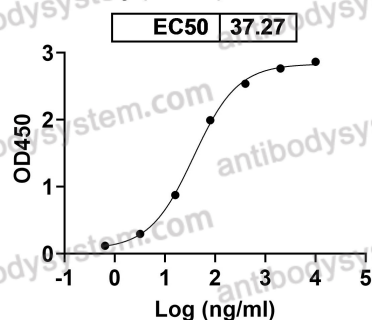
Catalog No.	RHF46101
Clone ID	BBM.1
Host species	Mouse
Species reactivity	Human
Form	Liquid
Storage buffer	0.01M PBS, pH 7.4.
Concentration	1 mg/ml
Purity	>95% as determined by SDS-PAGE.
Clonality	Monoclonal
Isotype	IgG2b-kappa
Applications	ELISA, FCM, WB
Target	Beta-2-microglobulin, Beta-2-microglobulin form pI 5.3, B2M, CDABP0092, HDCMA22P
Purification	Protein A/G purified from cell culture supernatant.
Endotoxin level	Please contact with the lab for this information.
Accession	P61769
Stability and Storage	Use a manual defrost freezer and avoid repeated freeze-thaw cycles. Store at 4°C short term (1-2 weeks). Store at -20°C 12 months. Store at -80°C long term.

Note

For research use only.

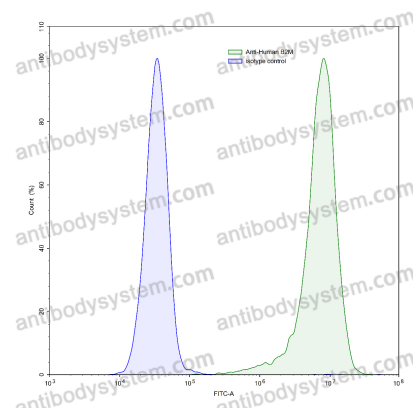
Data Image

Anti-Human B2M/Beta-2-microglobulin
Antibody (BBM.1) binds with B2M



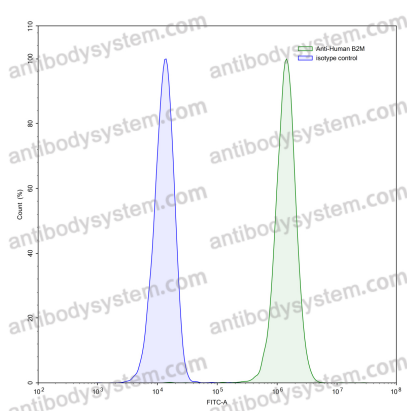
Bioactivity

Detects B2M/Beta-2-microglobulin in indirect ELISAs.



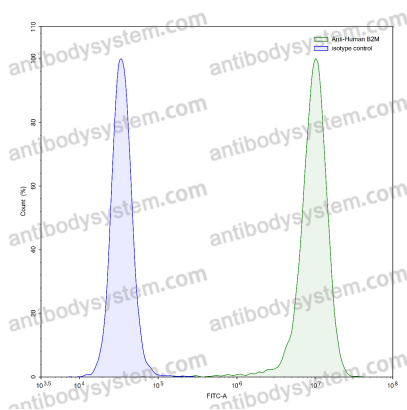
Flow-cytometry

Flow-cytometry using anti-human B2M antibody. HeLa cells were stained with an irrelevant antibody (Blue Histogram) or an anti-human B2M antibody monoclonal antibody (Catalog # RHF46101, Green Histogram) at a concentration of 5 µg/ml for 30 mins at RT. After washing, bound antibody was detected using a FITC conjugated goat anti-mouse antibody (Catalog # PMB96441) and cells analysed on a NovoCyte Flow Cytometer.



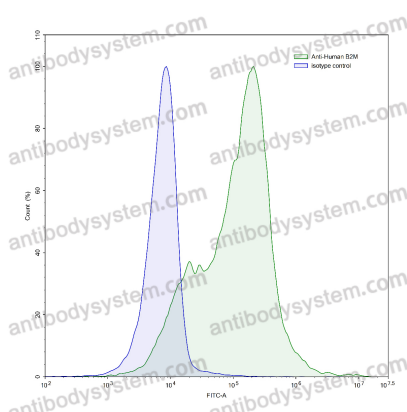
Flow-cytometry

Flow-cytometry using anti-human B2M antibody. Jurkat cells were stained with an irrelevant antibody (Blue Histogram) or an anti-human B2M antibody monoclonal antibody (Catalog # RHF46101, Green Histogram) at a concentration of 5 μ g/ml for 30 mins at RT. After washing, bound antibody was detected using a FITC conjugated goat anti-mouse antibody (Catalog # PMB96441) and cells analysed on a NovoCyte Flow Cytometer.



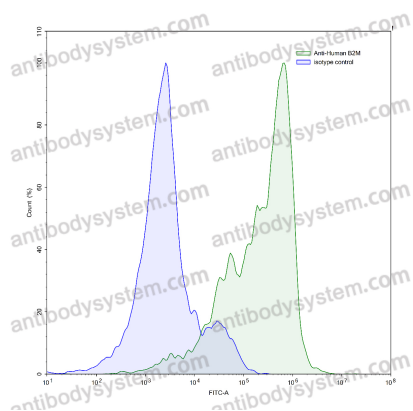
Flow-cytometry

Flow-cytometry using anti-human B2M antibody. A431 cells were stained with an irrelevant antibody (Blue Histogram) or an anti-human B2M antibody monoclonal antibody (Catalog # RHF46101, Green Histogram) at a concentration of 5 μ g/ml for 30 mins at RT. After washing, bound antibody was detected using a FITC conjugated goat anti-mouse antibody (Catalog # PMB96441) and cells analysed on a NovoCyte Flow Cytometer.



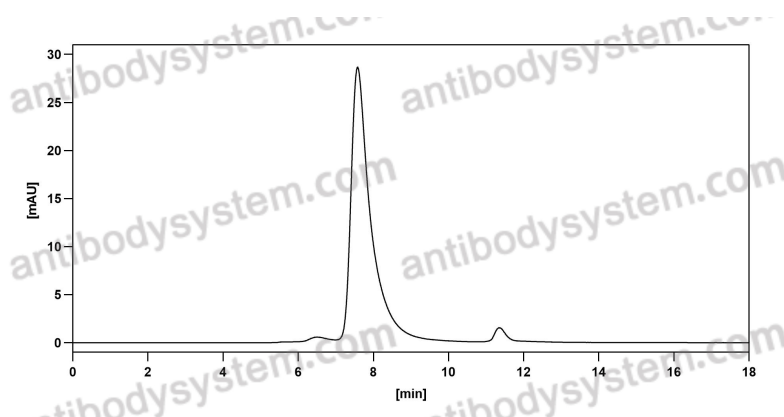
Flow-cytometry

Flow-cytometry using anti-human B2M antibody. Human peripheral blood lymphocytes were stained with an irrelevant antibody (Blue Histogram) or an anti-human B2M antibody monoclonal antibody (Catalog # RHF46101, Green Histogram) at a concentration of 5 μ g/ml for 30 mins at RT. After washing, bound antibody was detected using a FITC conjugated goat anti-mouse antibody (Catalog # PMB96441) and cells analysed on a NovoCyte Flow Cytometer.



Flow-cytometry

Flow-cytometry using anti-human B2M antibody. Human peripheral blood lymphocytes were stained with an irrelevant antibody (Blue Histogram) or an anti-human B2M antibody monoclonal antibody (Catalog # RHF46101, Green Histogram) at a concentration of 5 µg/ml for 30 mins at RT. After washing, bound antibody was detected using a FITC conjugated goat anti-mouse antibody (Catalog # PMB96441) and cells analysed on a NovoCyt Flow Cytometer.



SEC-HPLC

The purity of this product is >95% as determined by SEC-HPLC.