

Anti-Monkeypox virus/MPXV A35R Polyclonal Antibody

Summary

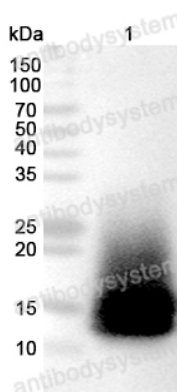
Catalog No.	PVV13101
Host species	Rabbit
Tested applications	ELISA: 1:4000-1:8000, IHC:1:50-1:200, WB: 1:1000-1:4000
Species reactivity	Monkeypox virus (MPXV)
Immunogen	E. coli - derived recombinant Monkeypox virus/MPXV A35R (Val57-Thr181).
Form	Liquid
Storage buffer	0.01M PBS, pH 7.4, 50% Glycerol, 0.05% Proclin 300.
Concentration	2.36 mg/ml
Clonality	Polyclonal
Isotype	IgG
Applications	ELISA, IHC, WB
Target	A35R, Bifunctional EEV membrane phosphoglycoprotein, Bifunctional EEV membrane phosphoglycoprotein/associates with A36R, Bifunctional EEV membrane protein, EEV membrane phosphoglycoprotein, EEV membrane phosphoglycoprotein C-type,EEV membrane phosphoglycoprotein, C-type lectin-like domain, MPXV-COP-139, MPXV-SL-139, MPXV-WRAIR139
Purification	Purified by antigen affinity column.

Stability and Storage

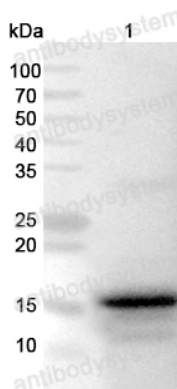
Use a manual defrost freezer and avoid repeated freeze thaw cycles. Store at 2 to 8°C for frequent use. Store at -20 to -80°C for twelve months from the date of receipt.

Note

For research use only.

Data Image

Western Blot



Western Blot

Recombinant Protein were subjected to SDS PAGE followed by western blot with Monkeypox virus/MPXV A35R antibody (PVV13101) at 1ug/ml.

Lane 1: Recombinant Monkeypox virus/MPXV A35R Protein([EVV13101](#))

Second Ab: Goat Anti-Rabbit IgG H&L Polyclonal antibody, HRP ([PTB96431](#)) at 0.1 µg/mL.

Predict MW: 16 kDa

Observed MW: 16 kDa

Recombinant Protein were subjected to SDS PAGE followed by western blot with Monkeypox virus/MPXV A35R antibody (PVV13101) at 1ug/ml.

Lane 1: Recombinant Monkeypox virus/MPXV A35R Protein([YVV13101](#))

Second Ab: Goat Anti-Rabbit IgG H&L Polyclonal antibody, HRP ([PTB96431](#)) at 0.1 µg/mL.

Predict MW: 16 kDa

Observed MW: 16 kDa