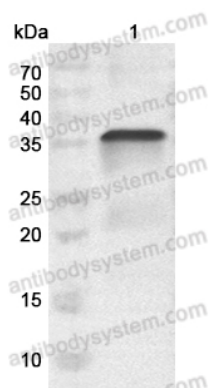


Anti-Monkeypox virus/MPXV B6R/SL-159 Polyclonal Antibody

Summary

Catalog No.	PVV13501
Host species	Rabbit
Tested applications	ELISA: 1:4000-1:8000, IHC: 1:50-1:200, IF: 1:50-1:100, WB: 1:1000-1:4000
Species reactivity	Monkeypox virus (strain Zaire-96-I-16) (MPX)
Immunogen	E. coli - derived recombinant Monkeypox virus/MPXV B6R/SL-159 (Thr20-His279).
Form	Liquid
Storage buffer	0.01M PBS, pH 7.4, 50% Glycerol, 0.05% Proclin 300.
Concentration	4.37 mg/ml
Clonality	Polyclonal
Isotype	IgG
Applications	ELISA, IHC, IF, WB
Target	B6R/SL-159
Purification	Purified by antigen affinity column.
Stability and Storage	Use a manual defrost freezer and avoid repeated freeze thaw cycles. Store at 2 to 8°C for frequent use. Store at -20 to -80°C for twelve months from the date of receipt.
Note	For research use only.

Data Image



Western Blot

Recombinant Protein were subjected to SDS PAGE followed by western blot with Monkeypox virus/MPXV B6R/SL-159 antibody (PVV13501) at 1ug/ml.

Lane 1: Recombinant Monkeypox virus/MPXV B6R/SL-159 protein([YVV13501](#))

Second Ab: Goat Anti-Rabbit IgG H&L Polyclonal antibody, HRP ([PTB96431](#)) at 0.1 µg/mL.

Predict MW: 37 kDa

Observed MW: 37 kDa