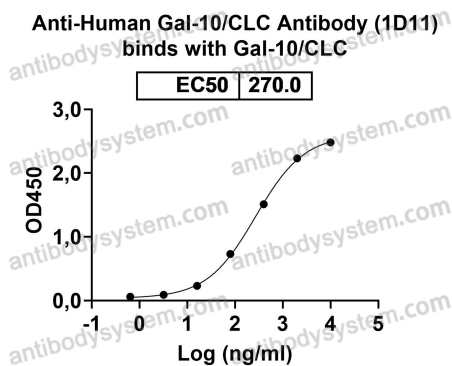


Anti-Human Gal-10/CLC Antibody (1D11)

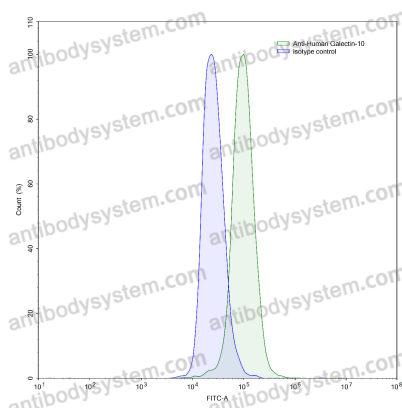
Summary

Catalog No.	RHG04501
Clone ID	1D11
Host species	Mouse
Species reactivity	Human
Form	Liquid
Storage buffer	0.01M PBS, pH 7.4.
Concentration	1 mg/ml
Purity	>95% as determined by SDS-PAGE.
Clonality	Monoclonal
Isotype	IgG2a, kappa
Applications	ELISA, FCM, SPR
Target	Lysolecithin acylhydrolase, Galectin-10, LGALS10A, CLC, Gal-10, LGALS10, Eosinophil lysophospholipase, Charcot-Leyden crystal protein
Purification	Protein A/G purified from cell culture supernatant.
Endotoxin level	Please contact with the lab for this information.
Accession	Q05315
Stability and Storage	Use a manual defrost freezer and avoid repeated freeze-thaw cycles. Store at 4°C short term (1-2 weeks). Store at -20°C 12 months. Store at -80°C long term.
Note	For research use only.

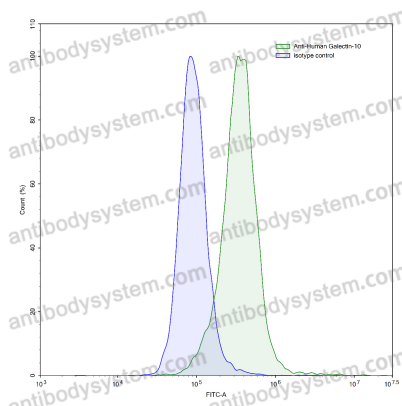
Data Image



Bioactivity



Flow-cytometry

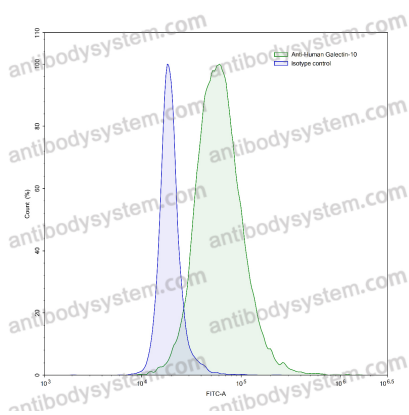


Flow-cytometry

Detects Human GAL10/CLC/Galectin-10 in indirect ELISAs.

Flow-cytometry using anti-human Galectin-10 antibody. HL-60 cells were stained with an irrelevant antibody (Blue Histogram) or an anti-human Galectin-10 antibody monoclonal antibody (Catalog # RHG04501, Green Histogram) at a concentration of 5 µg/ml for 30 mins at RT. After washing, bound antibody was detected using a FITC conjugated goat anti-mouse antibody (Catalog # PMB96441) and cells analysed on a NovoCyt Flow Cytometer.

Flow-cytometry using anti-human Galectin-10 antibody. HeLa cells were stained with an irrelevant antibody (Blue Histogram) or an anti-human Galectin-10 antibody monoclonal antibody (Catalog # RHG04501, Green Histogram) at a concentration of 5 µg/ml for 30 mins at RT. After washing, bound antibody was detected using a FITC conjugated goat anti-mouse antibody (Catalog # PMB96441) and cells analysed on a NovoCyt Flow Cytometer.



Flow-cytometry

Flow-cytometry using anti-human Galectin-10 antibody. Human peripheral blood lymphocytes were stained with an irrelevant antibody (Blue Histogram) or an anti-human Galectin-10 antibody monoclonal antibody (Catalog # RHG04501, Green Histogram) at a concentration of 5 μ g/ml for 30 mins at RT. After washing, bound antibody was detected using a FITC conjugated goat anti-mouse antibody (Catalog # PMB96441) and cells analysed on a NovoCyt Flow Cytometer.