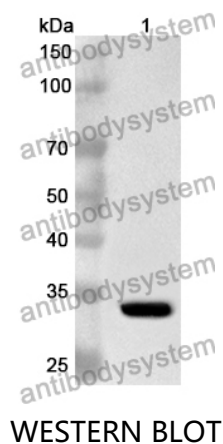


Anti-SUV39H1 Polyclonal Antibody

Summary

| | |
|------------------------------|--|
| Catalog No. | PHA67901 |
| Host species | Rabbit |
| Tested applications | ELISA: 1:4000-1:8000, IHC: 1:50-1:100, WB: 1:1000-1:4000 |
| Species reactivity | Human, Mouse |
| Immunogen | E. coli - derived recombinant Human SUV39H1 (Gly7-Met271). |
| Form | Liquid |
| Storage buffer | 0.01M PBS, pH 7.4, 50% Glycerol, 0.05% Proclin 300. |
| Clonality | Polyclonal |
| Isotype | IgG |
| Applications | ELISA, IHC, WB |
| Target | Position-effect variegation 3-9 homolog, SUV39H, H3-K9-HMTase 1, SUV39H1, Histone-lysine N-methyltransferase SUV39H1, Su(var)3-9 homolog 1, Lysine N-methyltransferase 1A, Histone H3-K9 methyltransferase 1, Suppressor of variegation 3-9 homolog 1, KMT1A |
| Purification | Purified by antigen affinity column. |
| Accession | O43463 |
| Stability and Storage | Use a manual defrost freezer and avoid repeated freeze thaw cycles. Store at 2 to 8°C for frequent use. Store at -20 to -80°C for twelve months from the date of receipt. |
| Note | For research use only. |

Data Image



Recombinant Protein lysates were subjected to SDS PAGE followed by western blot with SUV39H1 antibody (PHA67901) at 1 μ g/ml.

Lane 1: Recombinant protein

Second Ab: Goat Anti-Rabbit IgG H&L Polyclonal antibody, HRP (PTB96431) at 0.1 μ g/mL.

Predict MW: 33 kDa

Observed MW: 33 kDa