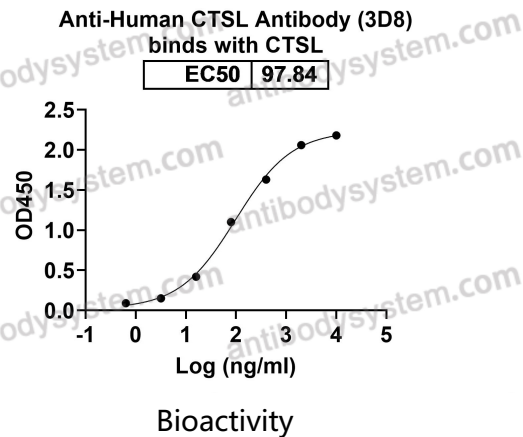


Anti-Human CTSL Antibody (3D8)

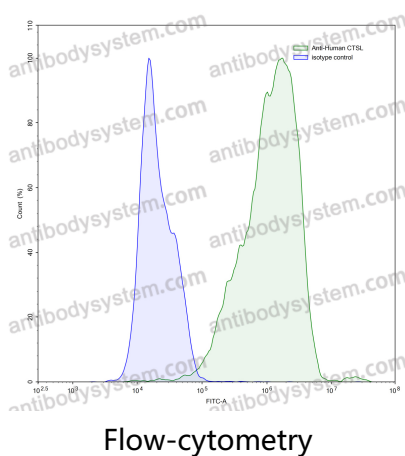
Summary

Catalog No.	RHC27301
Clone ID	3D8
Host species	Mouse
Species reactivity	Human
Form	Liquid
Storage buffer	0.01M PBS, pH 7.4.
Concentration	1 mg/ml
Purity	>95% as determined by SDS-PAGE.
Clonality	Monoclonal
Isotype	IgG2a, kappa
Applications	ELISA, FCM, IF, IP, WB
Target	CTSL1, MEP, Procathepsin L, Major excreted protein, Cathepsin L1, CTSL
Purification	Protein A/G purified from cell culture supernatant.
Endotoxin level	Please contact with the lab for this information.
Accession	P07711
Stability and Storage	Use a manual defrost freezer and avoid repeated freeze-thaw cycles. Store at 4°C short term (1-2 weeks). Store at -20°C 12 months. Store at -80°C long term.
Note	For research use only.

Data Image



Detects CTSL in indirect ELISAs.



Flow-cytometry using anti-human CTSL antibody. CTSL Transfected CHO cells were stained with an irrelevant antibody (Blue Histogram) or an anti-human CTSL antibody monoclonal antibody (Catalog # RHC27301, Green Histogram) at a concentration of 5 μ g/ml for 30 mins at RT. After washing, bound antibody was detected using a FITC conjugated goat anti-mouse antibody (Catalog # PMB96441) and cells analysed on a NovoCyt Flow Cytometer.