

Research Grade Ziltivekimab

Summary

Catalog No.	DHC15802
Alternative Names	COR-001, CAS: 2226654-05-1
Clone ID	Ziltivekimab
Host species	Humanized
Species reactivity	Human
Form	Liquid
Storage buffer	0.01M PBS, pH 7.4.
Concentration	1 mg/ml
Purity	>95% as determined by SDS-PAGE.
Clonality	Monoclonal
Isotype	IgG1-kappa
Applications	Research Grade Biosimilar
Target	Hybridoma growth factor, BSF-2, IFN-beta-2, CDF, IL6, Interleukin-6, IL-6, B-cell stimulatory factor 2, Interferon beta-2, IFNB2, CTL differentiation factor
Purification	Protein A/G purified from cell culture supernatant.
Endotoxin level	Please contact with the lab for this information.
Expression system	Mammalian Cells
Accession	P05231

Stability and Storage

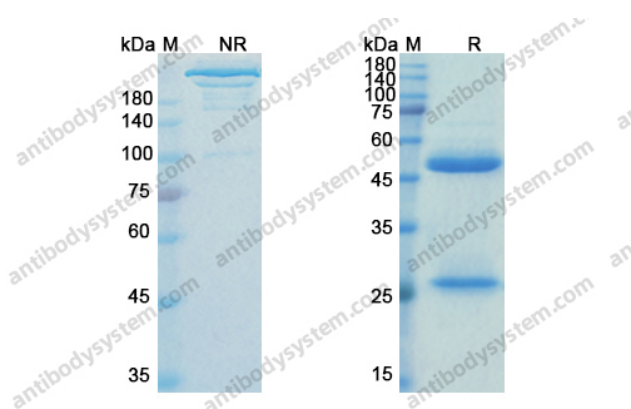
Use a manual defrost freezer and avoid repeated freeze-thaw cycles.

Store at 4°C short term (1-2 weeks). Store at -20°C 12 months. Store at -80°C long term.

Note

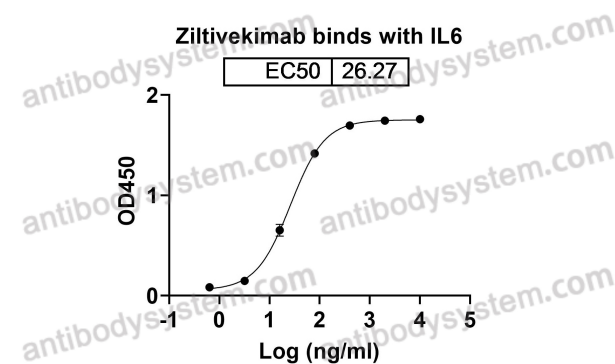
For research use only. Not suitable for clinical or therapeutic use.

Data Image



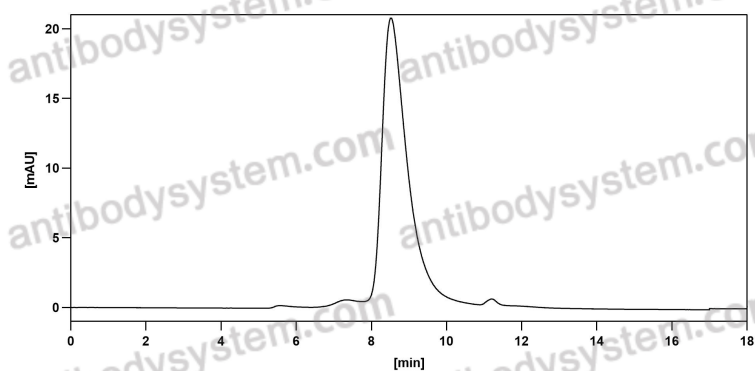
SDS PAGE for Ziltivekimab

SDS-PAGE



Detects IL6 in indirect ELISAs.

Bioactivity



The purity of this product is >95% as determined by SEC-HPLC.

SEC-HPLC