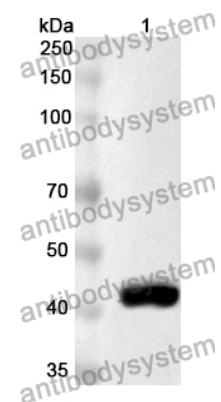


Anti-Human C3c Polyclonal Antibody

Summary

Catalog No.	PHB89901
Host species	Rabbit
Tested applications	ELISA: 1:4000-1:8000, IHC: 1:50-1:100, WB: 1:1000-1:4000
Species reactivity	Human
Immunogen	E. coli - derived recombinant Human C3c (Glu1322-Cys1661).
Form	Liquid
Storage buffer	0.01M PBS, pH 7.4, 50% Glycerol, 0.05% Proclin 300.
Clonality	Polyclonal
Isotype	IgG
Applications	ELISA, IHC, WB
Target	C3, ASP, Complement C3, C3adesArg, C3bc, CPAMD1, C3 and PZP-like alpha-2-macroglobulin domain-containing protein 1
Purification	Purified by antigen affinity column.
Accession	P01024
Stability and Storage	Use a manual defrost freezer and avoid repeated freeze thaw cycles. Store at 2 to 8°C for frequent use. Store at -20 to -80°C for twelve months from the date of receipt.
Note	For research use only. Not suitable for clinical or therapeutic use.

Data Image



WESTERN BLOT

Recombinant Protein lysates were subjected to SDS PAGE followed by western blot with C3c antibody (PHB89901) at 1 μ g/ml.

Lane 1: Recombinant protein

Second Ab: Goat Anti-Rabbit IgG H&L Polyclonal antibody, HRP (PTB96431) at 0.1 μ g/mL.

Predict MW: 42 kDa

Observed MW: 42 kDa