

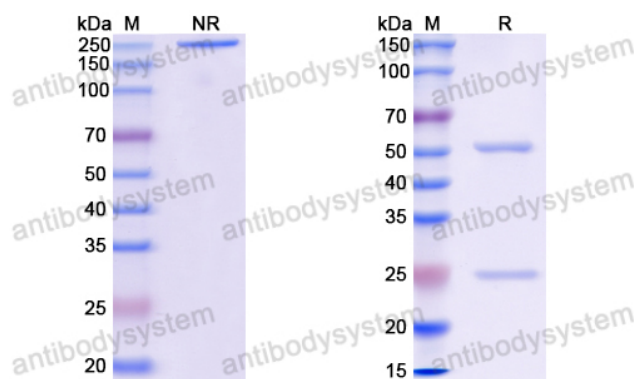
# Anti-EBV/HHV-4 gH/BXLF2 Antibody (CL40)

## Summary

---

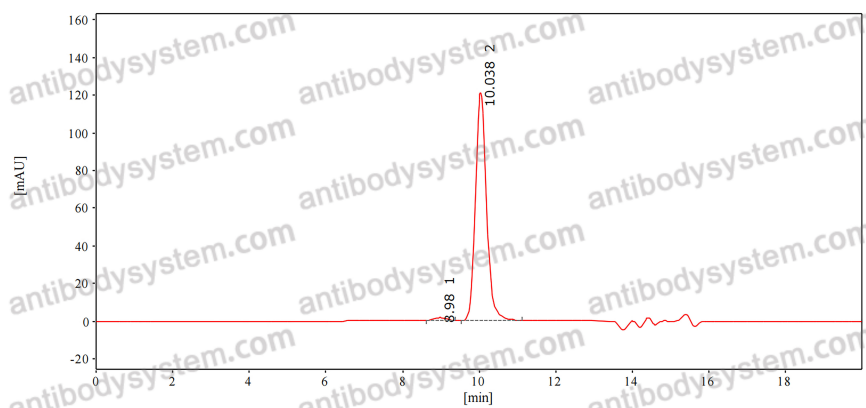
<b>Catalog No.</b>	RVV15101
<b>Clone ID</b>	CL40
<b>Host species</b>	Human
<b>Species reactivity</b>	Epstein-Barr virus (strain B95-8) (HHV-4) (Human herpesvirus 4), Epstein-Barr virus (strain GD1) (HHV-4) (Human herpesvirus 4)
<b>Form</b>	Liquid
<b>Storage buffer</b>	0.01M PBS, pH 7.4.
<b>Concentration</b>	2.28 mg/ml
<b>Purity</b>	>95% as determined by SDS-PAGE.
<b>Clonality</b>	Monoclonal
<b>Isotype</b>	IgG1, kappa
<b>Applications</b>	ELISA, Neutralization
<b>Target</b>	Envelope glycoprotein H, gH, BXLF2,gHgL
<b>Purification</b>	Protein A/G purified from cell culture supernatant.
<b>Endotoxin level</b>	Please contact with the lab for this information.
<b>Accession</b>	P03231, K9US75
<b>Stability and Storage</b>	Use a manual defrost freezer and avoid repeated freeze-thaw cycles. Store at 4°C short term (1-2 weeks). Store at -20°C 12 months. Store at -80°C long term.
<b>Note</b>	For research use only.

## Data Image



SDS PAGE for EBV/HHV-4 gH/BXLF2  
Antibody (CL40)

SDS-PAGE



The purity of this product is >95% as  
determined by SEC-HPLC.

SEC-HPLC