

Anti-Human TSLPR/CRLF2 Antibody (13H5)

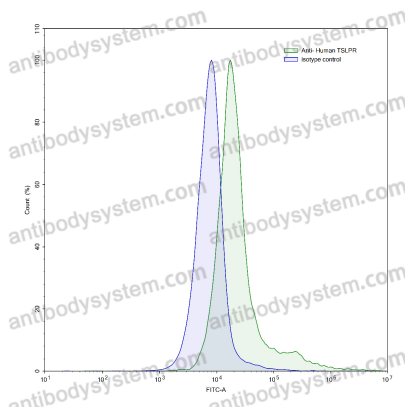
Summary

Catalog No.	RHK27201
Clone ID	13H5
Host species	Mouse
Species reactivity	Human
Form	Liquid
Storage buffer	0.01M PBS, pH 7.4.
Concentration	1 mg/ml
Purity	>95% as determined by SDS-PAGE.
Clonality	Monoclonal
Isotype	IgG1, kappa
Applications	Blocking, FCM
Target	Cytokine receptor-like 2, CRLF2, CRL2, Thymic stromal lymphopoietin protein receptor, Cytokine receptor-like factor 2, TSLPR, ILXR, IL-XR, TSLP receptor
Purification	Protein A/G purified from cell culture supernatant.
Endotoxin level	Please contact with the lab for this information.
Accession	Q9HC73
Stability and Storage	Use a manual defrost freezer and avoid repeated freeze-thaw cycles. Store at 4°C short term (1-2 weeks). Store at -20°C 12 months. Store at -80°C long term.

Note

For research use only.

Data Image



Flow-cytometry

Flow-cytometry using anti-human TSLPR antibody. Human peripheral blood lymphocytes were stained with an irrelevant antibody (Blue Histogram) or an anti-human TSLPR antibody monoclonal antibody (Catalog # RHK27201, Green Histogram) at a concentration of 5 µg/ml for 30 mins at RT. After washing, bound antibody was detected using a FITC conjugated goat anti-mouse antibody (Catalog # PMB96441) and cells analysed on a NovoCyt Flow Cytometer.