

Anti-Phospho-CASC5 (pT943) Antibody (pMELT-KNL1)

Summary

Catalog No.	RHK27001
Clone ID	pMELT-KNL1
Host species	Mouse
Species reactivity	Human
Form	Liquid
Storage buffer	0.01M PBS, pH 7.4.
Concentration	2 mg/ml
Purity	>95% as determined by SDS-PAGE.
Clonality	Monoclonal
Isotype	IgG2a, kappa
Applications	IHC, IP, WB
Target	Blinkin, CT29, Kinetochore-null protein 1, Cancer/testis antigen 29, Bub-linking kinetochore protein, Protein CASC5, Protein D40/AF15q14, ALL1-fused gene from chromosome 15q14 protein, Kinetochore scaffold 1, CASC5, KNL1, Cancer susceptibility candidate gene 5 protein, KIAA1570, AF15q14
Purification	Protein A/G purified from cell culture supernatant.
Endotoxin level	Please contact with the lab for this information.
Accession	Q8NG31

Recombinant Proteins & Antibodies

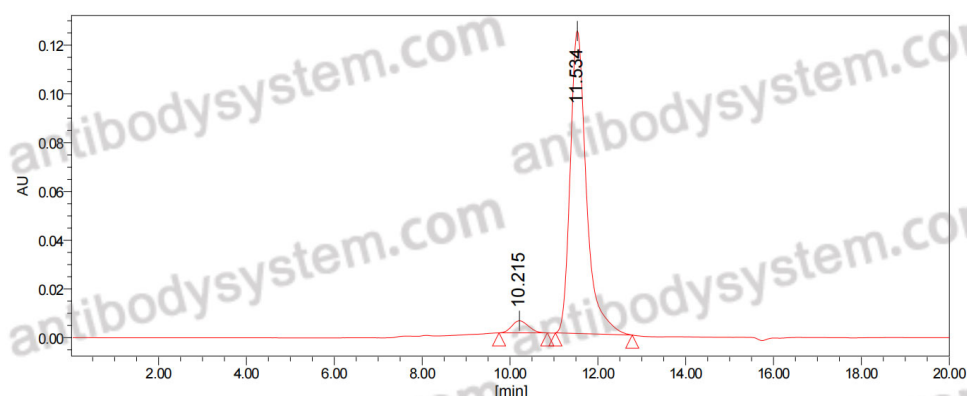
Stability and Storage

Use a manual defrost freezer and avoid repeated freeze-thaw cycles.

Store at 4°C short term (1-2 weeks). Store at -20°C 12 months. Store at -80°C long term.

Note

For research use only.

Data Image

SEC-HPLC

The purity of this product is >95% as determined by SEC-HPLC.