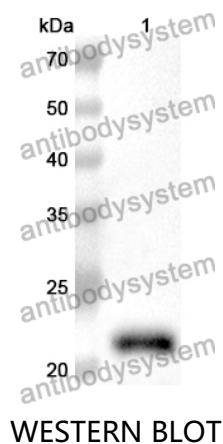


Anti-MYL12B Polyclonal Antibody

Summary

Catalog No.	PHA35601
Host species	Rabbit
Tested applications	ELISA: 1:4000-1:8000, IHC: 1:50-1:100, WB: 1:1000-1:4000
Species reactivity	Human, Mouse, Rat
Immunogen	E. coli - derived recombinant Human MYL12B (Lys5-Asp172).
Form	Liquid
Storage buffer	0.01M PBS, pH 7.4, 50% Glycerol, 0.05% Proclin 300.
Clonality	Polyclonal
Isotype	IgG
Applications	ELISA, IHC, WB
Target	Myosin regulatory light chain MRLC2,MLC20,MYL12B,Myosin regulatory light chain 12B,Myosin regulatory light chain 20 kDa,MYLC2B,Myosin regulatory light chain 2-B,smooth muscle isoform,SHUJUN-1,MLC-2,MRLC2,MLC-2A
Purification	Purified by antigen affinity column.
Accession	O14950
Stability and Storage	Use a manual defrost freezer and avoid repeated freeze thaw cycles. Store at 2 to 8°C for frequent use. Store at -20 to -80°C for twelve months from the date of receipt.
Note	For research use only.

Data Image



Recombinant Protein lysates were subjected to SDS PAGE followed by western blot with MYL12B antibody (PHA35601) at 1 µg/ml.

Lane 1: Recombinant protein

Second Ab: Goat Anti-Rabbit IgG H&L Polyclonal antibody, HRP (PTB96431) at 0.1 µg/mL.

Predict MW: 22 kDa

Observed MW: 22 kDa