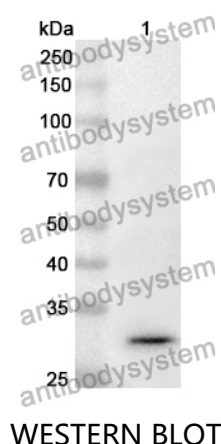


Anti-FSCN2 Polyclonal Antibody

Summary

Catalog No.	PHA34701
Host species	Rabbit
Tested applications	ELISA: 1:4000-1:8000, IHC: 1:50-1:100, WB: 1:1000-1:4000
Species reactivity	Human, Mouse, Rat
Immunogen	E. coli - derived recombinant Human FSCN2 (Gln8-His258).
Form	Liquid
Storage buffer	0.01M PBS, pH 7.4, 50% Glycerol, 0.05% Proclin 300.
Clonality	Polyclonal
Isotype	IgG
Applications	ELISA, IHC, WB
Target	Fascin-2, Retinal fascin, FSCN2
Purification	Purified by antigen affinity column.
Accession	O14926
Stability and Storage	Use a manual defrost freezer and avoid repeated freeze thaw cycles. Store at 2 to 8°C for frequent use. Store at -20 to -80°C for twelve months from the date of receipt.
Note	For research use only.

Data Image



WESTERN BLOT

Recombinant Protein lysates were subjected to SDS PAGE followed by western blot with FSCN2 antibody (PHA34701) at 1 µg/ml.

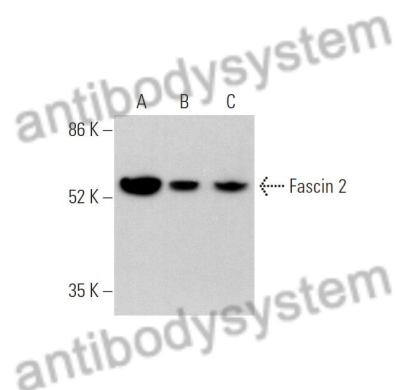
Lane 1: Recombinant protein

Second Ab: Goat Anti-Rabbit IgG H&L Polyclonal antibody, HRP (PTB96431) at 0.1 µg/mL.

Predict MW: 31 kDa

Observed MW: 31 kDa

Various lysates were subjected to SDS PAGE followed by western blot with FSCN2 antibody (PHA34701) at 1 µg/ml.



Western Blot

Lane 1: IMR-32

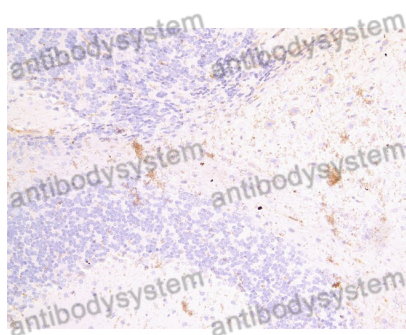
Lane 2: NIH/3T3

Lane 3: Neuro-2A

Second Ab: Goat Anti-Rabbit IgG H&L Polyclonal antibody, HRP (PTB96431) at 0.1 µg/mL.

Predict MW: 55 kDa

Observed MW: 55 kDa



Immunohistochemical

Immunohistochemical analysis of Mouse Brain stained for FSCN2 with PHA34701.