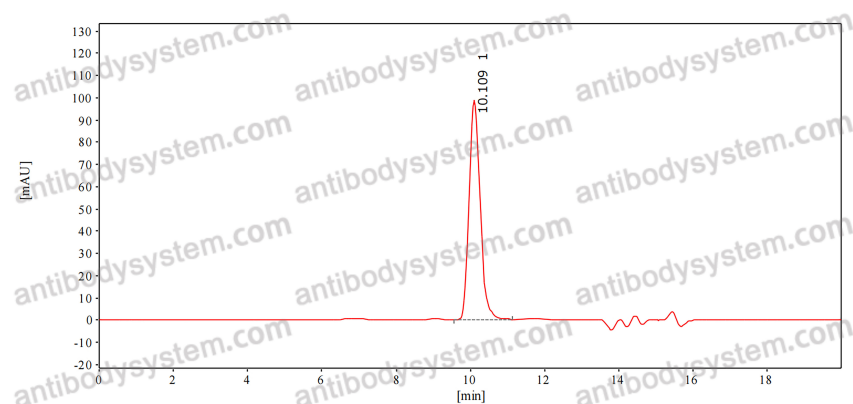


Anti-Human HLA-G Antibody (15E7#)

Summary

| | |
|------------------------------|---|
| Catalog No. | RHM00650 |
| Clone ID | 15E7# |
| Host species | Mouse |
| Species reactivity | Human |
| Form | Liquid |
| Storage buffer | 0.01M PBS, pH 7.4. |
| Concentration | 3.06 mg/ml |
| Purity | >95% as determined by SDS-PAGE. |
| Clonality | Monoclonal |
| Isotype | IgG2a, kappa |
| Applications | ELISA, FCM, SPR |
| Target | HLA-G, HLAG, sHLA-G, HLA G antigen, MHC class I antigen G, HLA-6.0, HLA class I histocompatibility antigen, alpha chain G, HLA-G-0031 |
| Purification | Protein A/G purified from cell culture supernatant. |
| Endotoxin level | Please contact with the lab for this information. |
| Accession | P17693 |
| Stability and Storage | Use a manual defrost freezer and avoid repeated freeze-thaw cycles. Store at 4°C short term (1-2 weeks). Store at -20°C 12 months. Store at -80°C long term. |
| Note | For research use only. |

Data Image



SEC-HPLC

The purity of this product is >95% as determined by SEC-HPLC.