

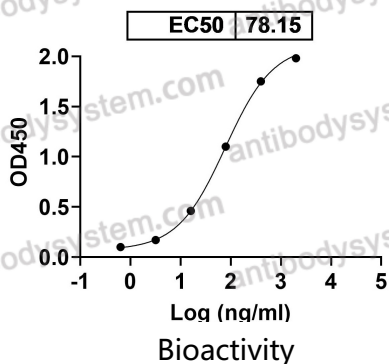
Anti-Human MMP14 Antibody (LEM-2/15)

Summary

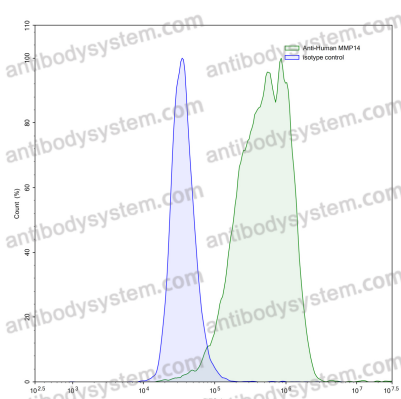
Catalog No.	RHE75501
Clone ID	LEM-2/15
Host species	Mouse
Form	Liquid
Storage buffer	0.01M PBS, pH 7.4.
Concentration	3.01 mg/ml
Purity	>95% as determined by SDS-PAGE.
Clonality	Monoclonal
Isotype	IgG1, kappa
Applications	Blocking, ELISA, ICC, IF, FCM, WB
Target	MT-MMP 1, Matrix metalloproteinase-14, Membrane-type matrix metalloproteinase 1, Membrane-type-1 matrix metalloproteinase, MMP14, MTMMP1, MT1-MMP, MMP-14, MMP-X1, MT1MMP
Purification	Protein A/G purified from cell culture supernatant.
Endotoxin level	Please contact with the lab for this information.
Accession	P50281
Stability and Storage	Use a manual defrost freezer and avoid repeated freeze-thaw cycles. Store at 4°C short term (1-2 weeks). Store at -20°C 12 months. Store at -80°C long term.
Note	For research use only.

Data Image

Anti-Human MMP14 Antibody (LEM-2/15)
binds with MMP14



Detects MMP14 in indirect ELISAs.



Flow-cytometry using anti-human MMP14 antibody. MDA-MB-231 cells were stained with an irrelevant antibody (Blue Histogram) or an anti-human MMP14 antibody monoclonal antibody (Catalog # RHE75501, Green Histogram) at a concentration of 5 µg/ml for 30 mins at RT. After washing, bound antibody was detected using a FITC conjugated goat anti-mouse antibody (Catalog # PMB96441) and cells analysed on a NovoCyte Flow Cytometer.