

Anti-Human CCL20/MIP-3-alpha Antibody (SAA0277)

Summary

Catalog No.	RHF69601
Clone ID	SAA0277
Host species	Mouse
Species reactivity	Human
Form	Liquid
Storage buffer	0.01M PBS, pH 7.4.
Concentration	1.71 mg/ml
Purity	>95% as determined by SDS-PAGE.
Clonality	Monoclonal
Isotype	IgG1, kappa
Applications	Blocking, ELISA, FCM
Target	Beta-chemokine exodus-1, SCYA20, LARC, C-C motif chemokine 20, Liver and activation-regulated chemokine, Small-inducible cytokine A20, MIP-3-alpha, CCL20, MIP3A, Macrophage inflammatory protein 3 alpha, CC chemokine LARC
Purification	Protein A/G purified from cell culture supernatant.
Endotoxin level	Please contact with the lab for this information.
Accession	P78556

Stability and Storage

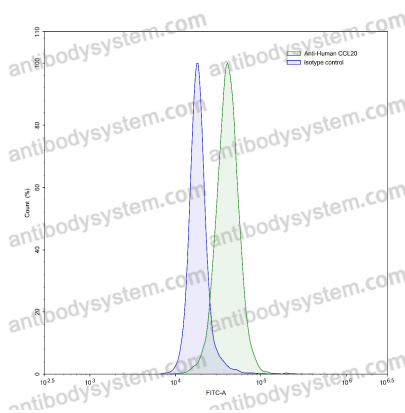
Use a manual defrost freezer and avoid repeated freeze-thaw cycles.

Store at 4°C short term (1-2 weeks). Store at -20°C 12 months. Store at -80°C long term.

Note

For research use only.

Data Image



Flow-cytometry

Flow-cytometry using anti-human CCL20 antibody. Human peripheral blood lymphocytes were stained with an irrelevant antibody (Blue Histogram) or an anti-human CCL20 antibody monoclonal antibody (Catalog # RHF69601, Green Histogram) at a concentration of 5 µg/ml for 30 mins at RT. After washing, bound antibody was detected using a FITC conjugated goat anti-mouse antibody (Catalog # PMB96441) and cells analysed on a NovoCyt Flow Cytometer.