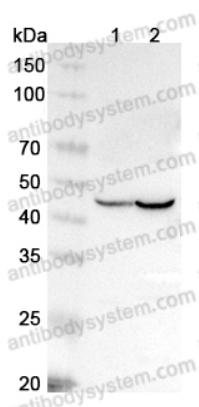


Anti-ISLR Polyclonal Antibody

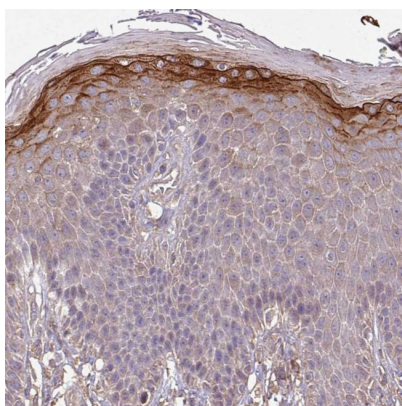
Summary

Catalog No.	PHA20001
Host species	Rabbit
Tested applications	ELISA: 1:4000-1:8000, IHC: 1:50-1:100, WB: 1:1000-1:4000
Species reactivity	Human, Mouse, Rat
Immunogen	E. coli - derived recombinant Human ISLR (Cys19-Phe428).
Form	Liquid
Storage buffer	0.01M PBS, pH 7.4, 50% Glycerol, 0.05% Proclin 300.
Clonality	Polyclonal
Isotype	IgG
Applications	ELISA, IHC, WB
Target	ISLR, Immunoglobulin superfamily containing leucine-rich repeat protein
Purification	Purified by antigen affinity column.
Accession	O14498
Stability and Storage	Use a manual defrost freezer and avoid repeated freeze thaw cycles. Store at 2 to 8°C for frequent use. Store at -20 to -80°C for twelve months from the date of receipt.
Note	For research use only.

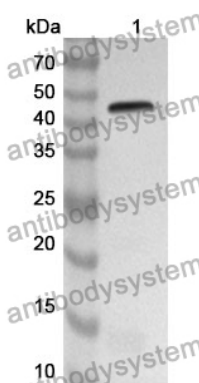
Data Image



Western Blot



Immunohistochemical



Western Blot

Various lysates were subjected to SDS PAGE followed by western blot with ISLR antibody (PHA20001) at 1µg/ml.

Lane 1: NICH460 cell lysate

Lane 2: Mouse heart lysate

Second Ab: Goat Anti-Rabbit IgG H&L Polyclonal antibody, HRP (PTB96431) at 0.1 µg/mL.

Predict MW: 45 kDa

Observed MW: 45 kDa

Immunohistochemical analysis of human skin stained for ISLR with PHA20001.

Recombinant Protein lysates were subjected to SDS PAGE followed by western blot with ISLR antibody (PHA20001) at 1 µg/ml.

Lane 1: Recombinant Protein

Second Ab: Goat Anti-Rabbit IgG H&L Polyclonal antibody, HRP (PTB96431) at 0.1 µg/mL.

Predict MW: 46 kDa

Observed MW: 46 kDa