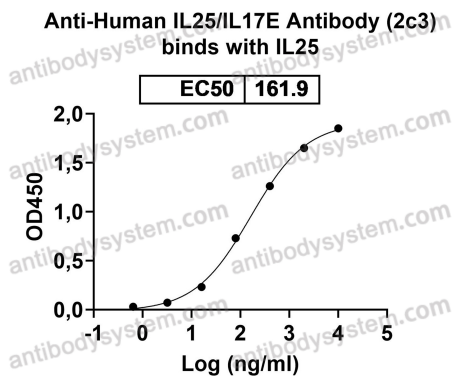


Anti-Human IL25/IL17E Antibody (2c3)

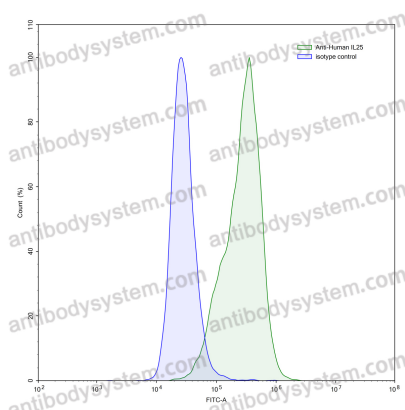
Summary

Catalog No.	RHJ55501
Clone ID	2c3
Host species	Mouse
Species reactivity	Human
Form	Liquid
Storage buffer	0.01M PBS, pH 7.4.
Concentration	1 mg/ml
Purity	>95% as determined by SDS-PAGE.
Clonality	Monoclonal
Isotype	IgG1, kappa
Applications	ELISA, FCM
Target	Interleukin-25, IL-25, IL17E, IL25, IL-17E, Interleukin-17E
Purification	Protein A/G purified from cell culture supernatant.
Endotoxin level	Please contact with the lab for this information.
Accession	Q9H293
Stability and Storage	Use a manual defrost freezer and avoid repeated freeze-thaw cycles. Store at 4°C short term (1-2 weeks). Store at -20°C 12 months. Store at -80°C long term.
Note	For research use only.

Data Image



Bioactivity



Flow-cytometry

Detects Human IL25/IL17E in indirect ELISAs.

Flow-cytometry using anti-human IL25 antibody. PC-3 cells were stained with an irrelevant antibody (Blue Histogram) or an anti-human IL25 antibody monoclonal antibody (Catalog # RHJ55501, Green Histogram) at a concentration of 5 µg/ml for 30 mins at RT. After washing, bound antibody was detected using a FITC conjugated goat anti-mouse antibody (Catalog # PMB96441) and cells analysed on a NovoCyte Flow Cytometer.