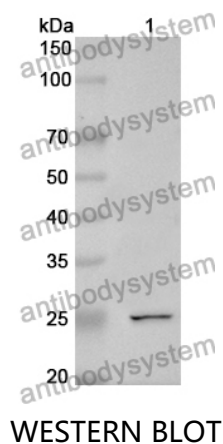


Anti-CCN1 Polyclonal Antibody

Summary

Catalog No.	PHA17001
Host species	Rabbit
Tested applications	ELISA: 1:4000-1:8000, IHC: 1:50-1:100, WB: 1:1000-1:4000
Species reactivity	Human, Mouse, Rat
Immunogen	E. coli - derived recombinant Human CCN1 (Leu178-Asp381).
Form	Liquid
Storage buffer	0.01M PBS, pH 7.4, 50% Glycerol, 0.05% Proclin 300.
Clonality	Polyclonal
Isotype	IgG
Applications	ELISA, IHC, WB
Target	Insulin-like growth factor-binding protein 10,Protein GIG1,IGF-binding protein 10,CYR61,Cellular communication network factor 1,IBP-10,Cysteine-rich angiogenic inducer 61,GIG1,Protein CYR61,CCN1,IGFBP-10,IGFBP10,CCN family member 1
Purification	Purified by antigen affinity column.
Accession	O00622
Stability and Storage	Use a manual defrost freezer and avoid repeated freeze thaw cycles. Store at 2 to 8°C for frequent use. Store at -20 to -80°C for twelve months from the date of receipt.
Note	For research use only.

Data Image



Recombinant Protein lysates were subjected to SDS PAGE followed by western blot with CCN1 antibody (PHA17001) at 1 μ g/ml.

Lane 1: Recombinant protein

Second Ab: Goat Anti-Rabbit IgG H&L Polyclonal antibody, HRP (PTB96431) at 0.1 μ g/mL.

Predict MW: 25 kDa

Observed MW: 25 kDa