

# Anti-Mouse LY6E/SCA-2 Antibody (SAA1998)

## Summary

---

<b>Catalog No.</b>	FMH28910
<b>Clone ID</b>	SAA1998
<b>Host species</b>	Mouse
<b>Conjugation</b>	Unconjugated
<b>Species reactivity</b>	Human, Mouse
<b>Form</b>	Liquid
<b>Storage buffer</b>	0.01M PBS, pH 7.4.
<b>Concentration</b>	0.65 mg/ml
<b>Purity</b>	>95% as determined by SDS-PAGE.
<b>Clonality</b>	Monoclonal
<b>Isotype</b>	IgG2a, kappa
<b>Applications</b>	FCM
<b>Target</b>	SCA-2, TSA-1, 9804, Retinoic acid-induced gene E protein, TSA1, Lymphocyte antigen 6E, Ly-6E, Stem cell antigen 2, Thymic shared antigen 1, SCA2, RIGE, LY6E, RIG-E
<b>Purification</b>	Protein A/G purified from cell culture supernatant.
<b>Endotoxin level</b>	Please contact with the lab for this information.
<b>Accession</b>	Q64253

**Stability and Storage**

Use a manual defrost freezer and avoid repeated freeze-thaw cycles.

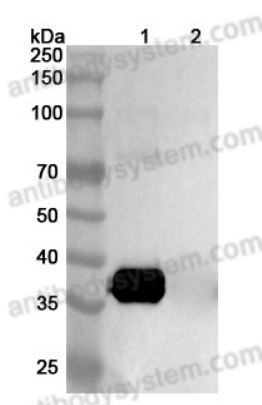
Store at 4°C short term (1-2 weeks). Store at -20°C 12 months. Store at -80°C long term.

**Note**

For research use only.

## Data Image

---



Western Blot

Various lysates were subjected to SDS PAGE followed by western blot with LY6E antibody (FMH28910) at 1 µg/ml.

Lane 1: LY6E transfected HEK293 cell lysate

Lane 2: Non-transfected HEK293 cell lysate

Second Ab: Goat Anti-Mouse IgG H&L Polyclonal antibody, HRP (PMB96431) at 0.1 µg/mL.

Predict MW: 36 kDa

Observed MW: 36 kDa