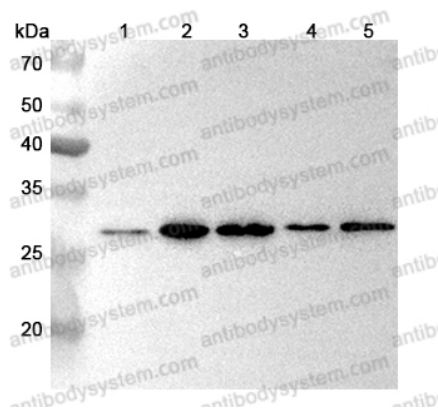


Anti-PSMD9 Polyclonal Antibody

Summary

Catalog No.	PHA06501
Host species	Rabbit
Tested applications	ELISA: 1:4000-1:8000, IHC: 1:50-1:100, WB: 1:1000-1:4000
Species reactivity	Human, Mouse, Rat
Immunogen	E. coli - derived recombinant Human PSMD9 (Ser2-Arg223).
Form	Liquid
Storage buffer	0.01M PBS, pH 7.4, 50% Glycerol, 0.05% Proclin 300.
Clonality	Polyclonal
Isotype	IgG
Applications	ELISA, IHC, WB
Target	26S proteasome regulatory subunit p27, 26S proteasome non-ATPase regulatory subunit 9, PSMD9
Purification	Purified by antigen affinity column.
Accession	O00233
Stability and Storage	Use a manual defrost freezer and avoid repeated freeze thaw cycles. Store at 2 to 8°C for frequent use. Store at -20 to -80°C for twelve months from the date of receipt.
Note	For research use only.

Data Image



Western Blot

Various lysates were subjected to SDS PAGE followed by western blot with PSMD9 antibody (PHA06501) at 1 μ g/ml.

Lane 1: NIH3T3 cell lysate

Lane 2: HepG2 cell lysate

Lane 3: K562 cell lysate

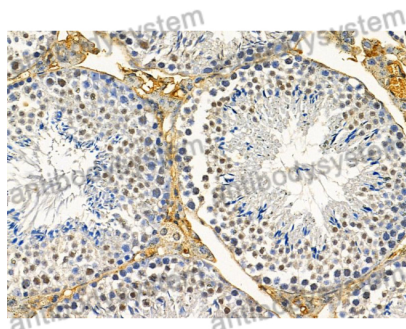
Lane 4: Lncap cell lysate

Lane 5: Hela cell lysate

Second Ab: Goat Anti-Rabbit IgG H&L Polyclonal antibody, HRP (PTB96431) at 0.1 μ g/mL.

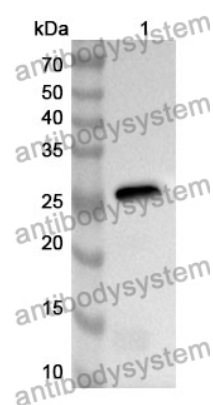
Predict MW: 25 kDa

Observed MW: 28 kDa



Immunohistochemical

Immunohistochemical analysis of mouse testis stained for PSMD9 with PHA06501.



Western Blot

Recombinant Protein lysates were subjected to SDS PAGE followed by western blot with PSMD9 antibody (PHA06501) at 1 µg/ml.

Lane 1: Recombinant Protein

Second Ab: Goat Anti-Rabbit IgG H&L Polyclonal antibody, HRP (PTB96431) at 0.1 µg/mL.

Predict MW: 27 kDa

Observed MW: 27 kDa