

# Research Grade Otilimab

## Summary

---

<b>Catalog No.</b>	DHC06702
<b>Alternative Names</b>	MOR-04357, 3196165, GSK3196165, MOR103, CAS: 1638332-55-4
<b>Clone ID</b>	Otilimab
<b>Host species</b>	Human
<b>Species reactivity</b>	Human
<b>Form</b>	Liquid
<b>Storage buffer</b>	0.01M PBS, pH 7.4.
<b>Concentration</b>	1 mg/ml
<b>Purity</b>	>95% as determined by SDS-PAGE.
<b>Clonality</b>	Monoclonal
<b>Isotype</b>	IgG1-lambda
<b>Applications</b>	Research Grade Biosimilar
<b>Target</b>	Granulocyte-macrophage colony-stimulating factor, Sargramostim, GM-CSF, CSF, Colony-stimulating factor, CSF2, GM-CSF, Molgramostin
<b>Purification</b>	Protein A/G purified from cell culture supernatant.
<b>Endotoxin level</b>	Please contact with the lab for this information.
<b>Expression system</b>	Mammalian Cells
<b>Accession</b>	P04141

## Stability and Storage

Use a manual defrost freezer and avoid repeated freeze-thaw cycles.

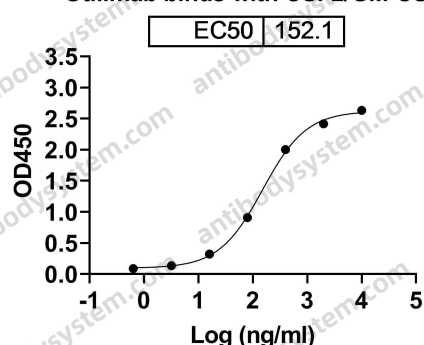
Store at 4°C short term (1-2 weeks). Store at -20°C 12 months. Store at -80°C long term.

## Note

For research use only. Not suitable for clinical or therapeutic use.

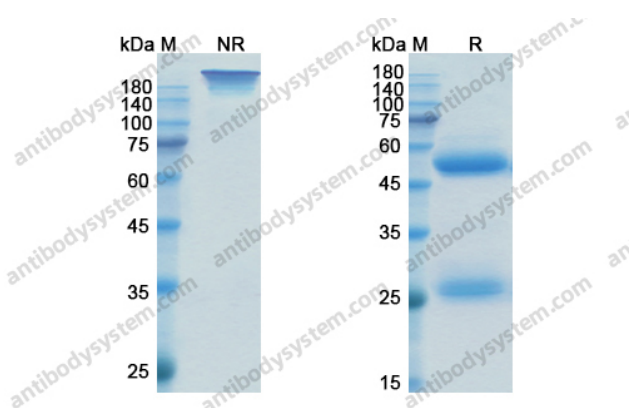
## Data Image

Otilimab binds with CSF2/GM-CSF



Detects Human CSF2/GM-CSF in indirect ELISAs.

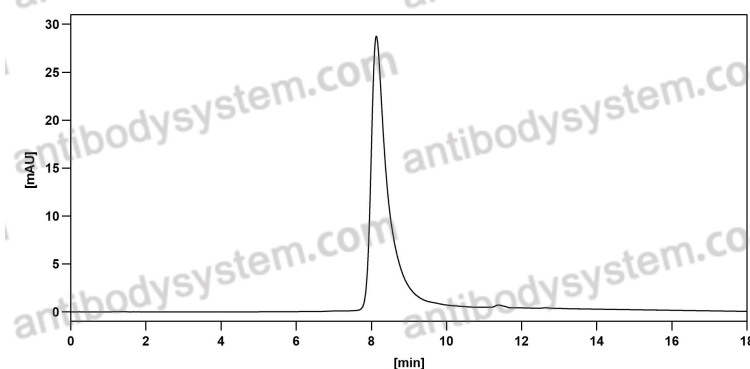
Bioactivity



SDS PAGE for Otilimab

SDS-PAGE

## Recombinant Proteins &amp; Antibodies



The purity of this product is >95% as determined by SEC-HPLC.

SEC-HPLC