

Research Grade Anti-Human SIRP α / γ Antibody (Kwar23)

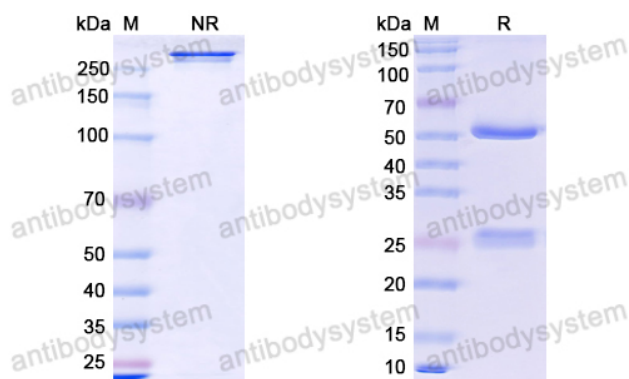
Summary

Catalog No.	DHF64001
Clone ID	Kwar23
Host species	Human
Species reactivity	Human
Form	Liquid
Storage buffer	0.01M PBS, pH 7.4.
Concentration	1.51 mg/ml
Purity	>95% as determined by SDS-PAGE.
Clonality	Monoclonal
Isotype	IgG1
Applications	Research Grade Biosimilar
Target	BIT, Signal-regulatory protein alpha-1, Brain Ig-like molecule with tyrosine-based activation motifs, MFR, SIRP, Sirp-alpha-1, Sirp-alpha-2, PTPNS1, SIRPA, SHP substrate 1, CD172 antigen-like family member A, Sirp-alpha-3, Inhibitory receptor SHPS-1, Signal-regulatory protein alpha-3, CD172a, Tyrosine-protein phosphatase non-receptor type substrate 1, MyD-1 antigen, Bit, SHPS-1, Macrophage fusion receptor, Signal-regulatory protein alpha-2, SHPS1, MYD1, p84, SIRPB2, Signal-regulatory protein beta-2, CD172g, SIRP-beta-2, SIRP-b2, SIRPG, CD172 antigen-like family member B, SIRP-gamma, Signal-regulatory protein gamma

Recombinant Proteins & Antibodies

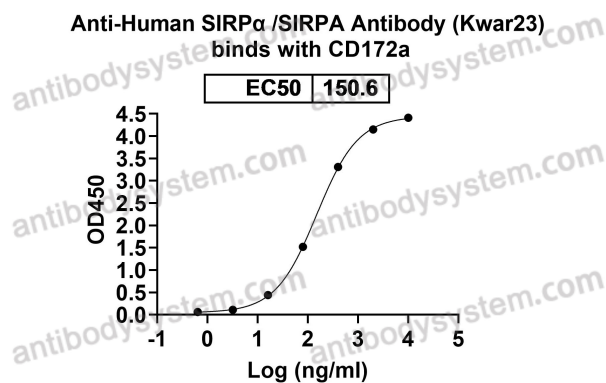
Purification	Protein A/G purified from cell culture supernatant.
Endotoxin level	Please contact with the lab for this information.
Expression system	Mammalian Cells
Accession	P78324 & Q9P1W8
Stability and Storage	Use a manual defrost freezer and avoid repeated freeze-thaw cycles. Store at 4°C short term (1-2 weeks). Store at -20°C 12 months. Store at -80°C long term.
Note	For research use only. Not suitable for clinical or therapeutic use.

Data Image



SDS PAGE for Anti-Human SIRP α / γ Antibody (Kwar23)

SDS-PAGE



Detects CD172a/SIRPA in indirect ELISAs.

Bioactivity