

Research Grade Linvoseltamab

Summary

Catalog No.	DHF92408
Alternative Names	Bispecific, REGN 5458, REGN-5458, REGN5458, CAS: 2408319-25-3
Clone ID	Linvoseltamab
Host species	Human
Species reactivity	Human
Form	Liquid
Storage buffer	0.01M PBS, pH 7.4.
Concentration	1.44 mg/ml
Purity	>95% as determined by SDS-PAGE.
Clonality	Monoclonal
Isotype	IgG4-kappa
Applications	Research Grade Biosimilar
Target	Tumor necrosis factor receptor superfamily member 17, TNFRSF17, CD269, B-cell maturation protein, BCMA, BCM, T3E, T-cell surface antigen T3/Leu-4 epsilon chain, CD3e, CD3E, T-cell surface glycoprotein CD3 epsilon chain
Purification	Protein A/G purified from cell culture supernatant.
Endotoxin level	Please contact with the lab for this information.
Expression system	Mammalian Cells
Accession	Q02223 & P07766

Stability and Storage

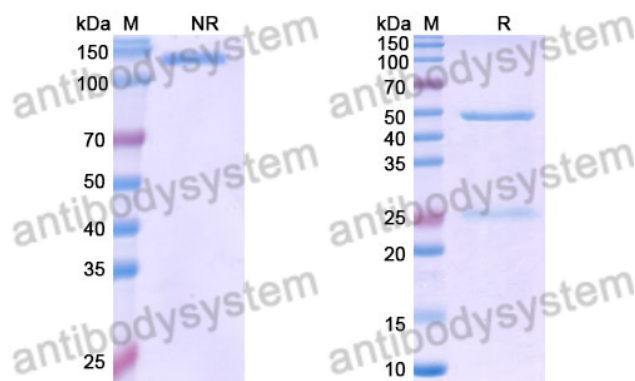
Use a manual defrost freezer and avoid repeated freeze-thaw cycles.

Store at 4°C short term (1-2 weeks). Store at -20°C 12 months. Store at -80°C long term.

Note

For research use only. Not suitable for clinical or therapeutic use.

Data Image



SDS PAGE for Linvoseltamab

SDS-PAGE