

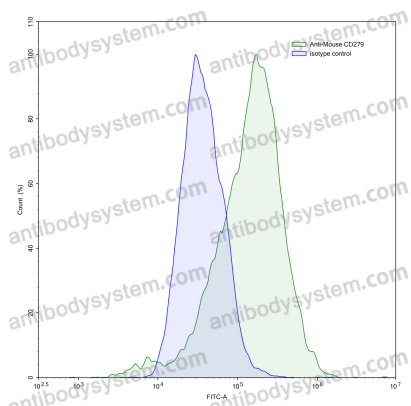
Anti-Mouse CD279/PDCD1/PD1 Antibody (J43V2)

Summary

| | |
|------------------------------|---|
| Catalog No. | FMH02210 |
| Clone ID | J43V2 |
| Host species | Mouse |
| Conjugation | Unconjugated |
| Species reactivity | Mouse |
| Form | Liquid |
| Storage buffer | 0.01M PBS, pH 7.4. |
| Concentration | 1 mg/ml |
| Purity | >95% as determined by SDS-PAGE. |
| Clonality | Monoclonal |
| Isotype | IgG2a |
| Applications | FCM |
| Target | Programmed cell death protein 1, Protein PD-1, hPD-1, PD1, PDCD1, CD279 |
| Purification | Protein A/G purified from cell culture supernatant. |
| Endotoxin level | Please contact with the lab for this information. |
| Accession | Q02242 |
| Stability and Storage | Use a manual defrost freezer and avoid repeated freeze-thaw cycles. Store at 4°C short term (1-2 weeks). Store at -20°C 12 months. Store at -80°C long term. |

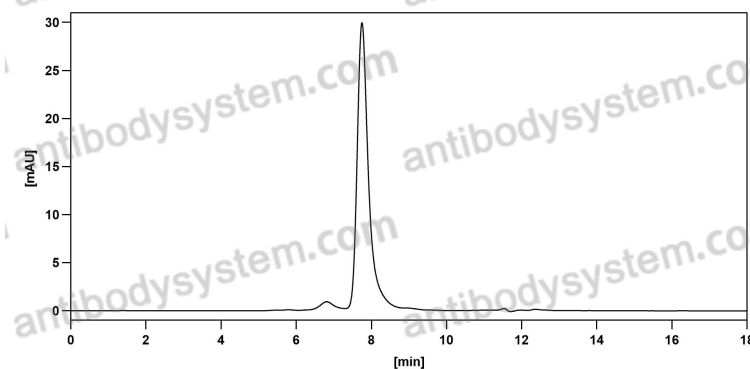
Note For research use only.

Data Image



Flow-cytometry

Flow-cytometry using anti-mouse CD279 antibody. CD279 Transfected CHO cells were stained with an irrelevant antibody (Blue Histogram) or an anti-mouse CD279 antibody monoclonal antibody (Catalog # FMH02210, Green Histogram) at a concentration of 5 $\mu\text{g/ml}$ for 30 mins at RT. After washing, bound antibody was detected using a FITC conjugated goat anti-mouse antibody (Catalog # PMB96441) and cells analysed on a NovoCyt Flow Cytometer.



SEC-HPLC

The purity of this product is >95% as determined by SEC-HPLC.