

Anti-Human SIGLEC15/CD33L3 Antibody (A9E8)

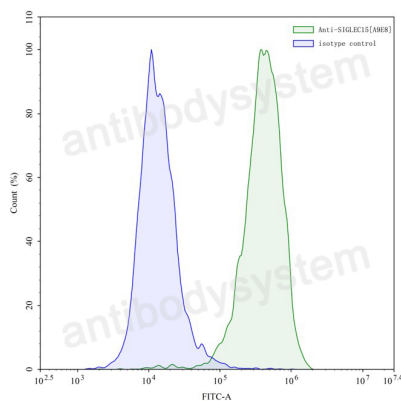
Summary

Catalog No.	FHK13710
Clone ID	A9E8
Host species	Mouse
Conjugation	Unconjugated
Species reactivity	Human
Form	Liquid
Storage buffer	0.01M PBS, pH 7.4.
Concentration	1 mg/ml
Purity	>95% as determined by SDS-PAGE.
Clonality	Monoclonal
Isotype	IgG1, kappa
Applications	FCM
Target	CD33L3, Siglec-15, Sialic acid-binding Ig-like lectin 15, SIGLEC15, CD33 antigen-like 3
Purification	Protein A/G purified from cell culture supernatant.
Endotoxin level	Please contact with the lab for this information.
Accession	Q6ZMC9
Stability and Storage	Use a manual defrost freezer and avoid repeated freeze-thaw cycles. Store at 4°C short term (1-2 weeks). Store at -20°C 12 months. Store at -80°C long term.

Note

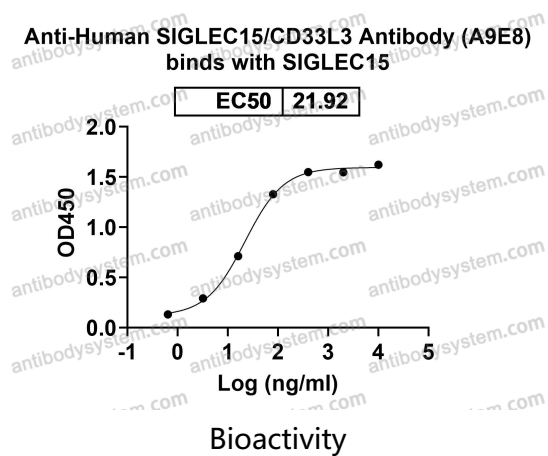
For research use only.

Data Image



Flow cytometry

Flow cytometry analysis with Anti-Human SIGLEC15/CD33L3 mAb (A9E8) 5 µg/ml (FHK13710) on XtenCHO cells transfected with Human SIGLEC15/CD33L3 or the ([FMJ92820](#)) (blue histogram).



Detects human SIGLEC15 in indirect ELISAs.