

Anti-Human SIGLEC15/CD33L3 Antibody (25E9#)

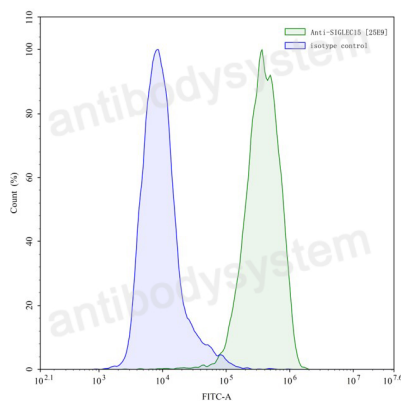
Summary

Catalog No.	FHK13720
Clone ID	25E9#
Host species	Human
Conjugation	Unconjugated
Species reactivity	Human
Form	Liquid
Storage buffer	0.01M PBS, pH 7.4.
Concentration	1 mg/ml
Purity	>95% as determined by SDS-PAGE.
Clonality	Monoclonal
Isotype	IgG1, kappa
Applications	FCM
Target	CD33L3, Siglec-15, Sialic acid-binding Ig-like lectin 15, SIGLEC15, CD33 antigen-like 3
Purification	Protein A/G purified from cell culture supernatant.
Endotoxin level	Please contact with the lab for this information.
Accession	Q6ZMC9
Stability and Storage	Use a manual defrost freezer and avoid repeated freeze-thaw cycles. Store at 4°C short term (1-2 weeks). Store at -20°C 12 months. Store at -80°C long term.

Note

For research use only.

Data Image



Flow cytometry

Flow cytometry analysis with Anti-Human SIGLEC15/CD33L3 mAb (25E9#) 5 µg/ml (FHK13720) on XtenCHO cells transfected with Human SIGLEC15/CD33L3 (green histogram) or the isotype control ([FHJ92850](#)) (blue histogram).