

Anti-Human CD8A Antibody (mab1)

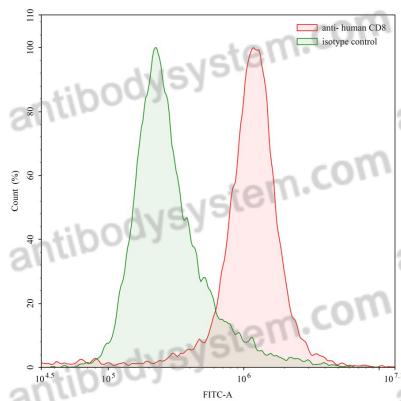
Summary

Catalog No.	FHB96010
Clone ID	mab1
Host species	Mouse
Conjugation	Unconjugated
Species reactivity	Human
Form	Liquid
Storage buffer	0.01M PBS, pH 7.4.
Concentration	0.61 mg/ml
Purity	>95% as determined by SDS-PAGE.
Clonality	Monoclonal
Isotype	IgG1, kappa
Applications	FCM
Target	T-cell surface glycoprotein CD8 alpha chain, CD8a, T-lymphocyte differentiation antigen T8/Leu-2, MAL, CD8A
Purification	Protein A/G purified from cell culture supernatant.
Endotoxin level	Please contact with the lab for this information.
Accession	P01732
Stability and Storage	Use a manual defrost freezer and avoid repeated freeze-thaw cycles. Store at 4°C short term (1-2 weeks). Store at -20°C 12 months. Store at -80°C long term.

Note

For research use only.

Data Image

**Flow-cytometry**

Flow-cytometry using anti- human CD8 antibody. Human RPMI-8226 cell line were stained with an irrelevant antibody (Green Histogram) or an anti-human CD8 antibody monoclonal antibody (Catalog # FHB96010 , Red Histogram) at a concentration of 20 μ g/ml for 30 mins at RT. After washing, bound antibody was detected using a FITC conjugated goat anti-mouse antibody (Catalog # PMB96441) and cells analysed on a NovoCyte Flow Cytometer.