

# Anti-Human CD3E Antibody (UCHT-1)

## Summary

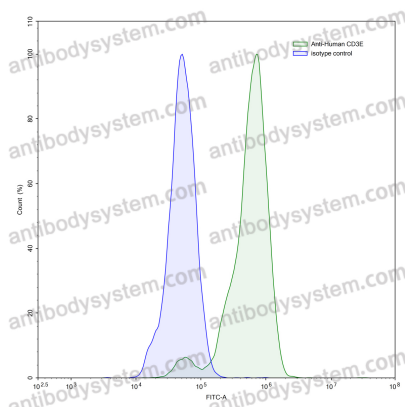
---

<b>Catalog No.</b>	FHC27720
<b>Clone ID</b>	UCHT-1
<b>Host species</b>	Rabbit
<b>Conjugation</b>	Unconjugated
<b>Species reactivity</b>	Human
<b>Form</b>	Liquid
<b>Storage buffer</b>	0.01M PBS, pH 7.4.
<b>Concentration</b>	1 mg/ml
<b>Purity</b>	>95% as determined by SDS-PAGE.
<b>Clonality</b>	Monoclonal
<b>Isotype</b>	IgG, kappa
<b>Applications</b>	FCM
<b>Target</b>	T3E, T-cell surface antigen T3/Leu-4 epsilon chain, CD3e, CD3E, T-cell surface glycoprotein CD3 epsilon chain , UCHT1
<b>Purification</b>	Protein A/G purified from cell culture supernatant.
<b>Endotoxin level</b>	Please contact with the lab for this information.
<b>Accession</b>	P07766
<b>Stability and Storage</b>	Use a manual defrost freezer and avoid repeated freeze-thaw cycles. Store at 4°C short term (1-2 weeks). Store at -20°C 12 months. Store at -80°C long term.

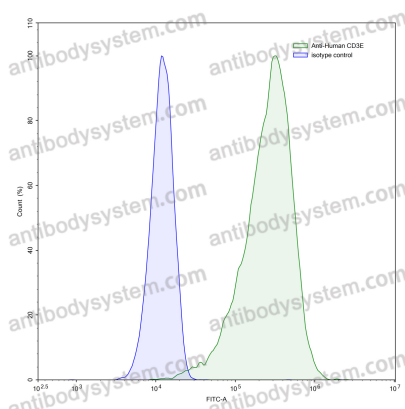
**Note**

For research use only.

## Data Image



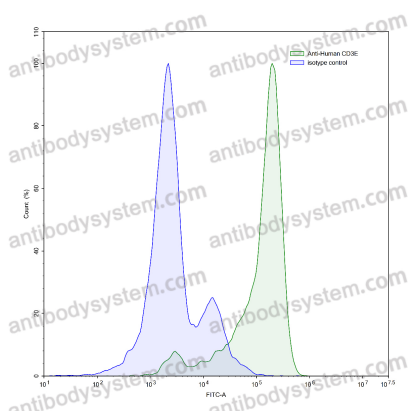
Flow-cytometry



Flow-cytometry

Flow-cytometry using anti-human CD3E antibody. Transfected CHO cells were stained with an irrelevant antibody (Blue Histogram) or an anti-human CD3E antibody monoclonal antibody (Catalog # FHC27720, Green Histogram) at a concentration of 5  $\mu$ g/ml for 30 mins at RT. After washing, bound antibody was detected using a FITC conjugated goat anti-rabbit antibody (Catalog # PTB96441) and cells analysed on a NovoCyt Flow Cytometer.

Flow-cytometry using anti-human CD3E antibody. Jurkat cells were stained with an irrelevant antibody (Blue Histogram) or an anti-human CD3E antibody monoclonal antibody (Catalog # FHC27720, Green Histogram) at a concentration of 5  $\mu$ g/ml for 30 mins at RT. After washing, bound antibody was detected using a FITC conjugated goat anti-rabbit antibody (Catalog # PTB96441) and cells analysed on a NovoCyt Flow Cytometer.



Flow-cytometry

Flow-cytometry using anti-human CD3E antibody. Human peripheral blood lymphocytes were stained with an irrelevant antibody (Blue Histogram) or an anti-human CD3E antibody monoclonal antibody (Catalog # FHC27720, Green Histogram) at a concentration of 5 µg/ml for 30 mins at RT. After washing, bound antibody was detected using a FITC conjugated goat anti-rabbit antibody (Catalog # PTB96441) and cells analysed on a NovoCyt Flow Cytometer.