

Anti-Human CD368/CLEC4D Antibody (9B9)

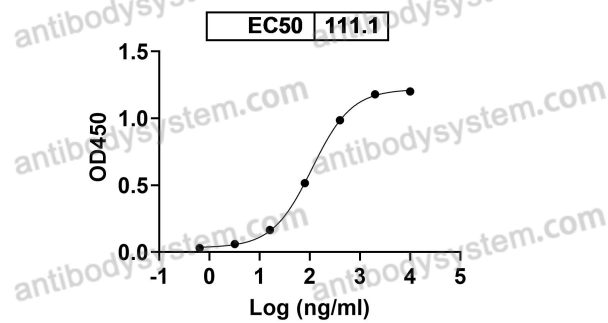
Summary

Catalog No.	FHJ95010
Clone ID	9B9
Host species	Mouse
Conjugation	Unconjugated
Species reactivity	Human
Form	Liquid
Storage buffer	0.01M PBS, pH 7.4.
Concentration	1 mg/ml
Purity	>95% as determined by SDS-PAGE.
Clonality	Monoclonal
Isotype	IgG2b, kappa
Applications	FCM
Target	CD368, CLECSF8, C-type lectin domain family 4 member D, C-type lectin superfamily member 8, MCL, C-type lectin-like receptor 6, CLEC4D, CLEC-6
Purification	Protein A/G purified from cell culture supernatant.
Endotoxin level	Please contact with the lab for this information.
Accession	Q8WXI8
Stability and Storage	Use a manual defrost freezer and avoid repeated freeze-thaw cycles. Store at 4°C short term (1-2 weeks). Store at -20°C 12 months. Store at -80°C long term.

Note For research use only.

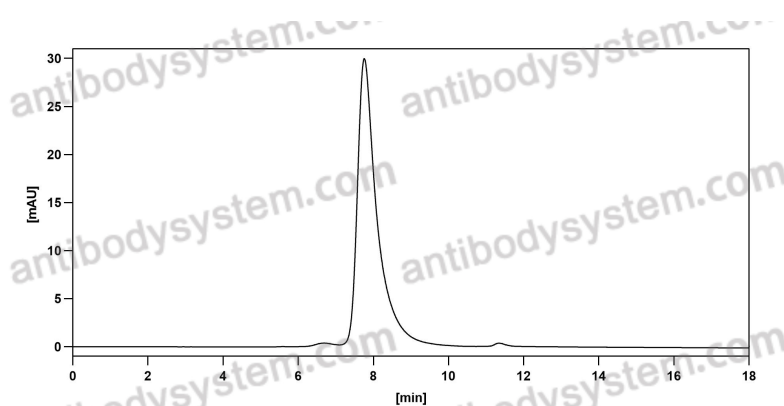
Data Image

Anti-Human CD368/CLEC4D Antibody (9B9)
binds with Human CD368



Detects CD368/CLEC4D in indirect ELISAs.

Bioactivity



The purity of this product is >95% as determined by SEC-HPLC.

SEC-HPLC