

Anti-Human CD299/CLEC4M Antibody (16E7#)

Summary

Catalog No.	FHJ56010
Clone ID	16E7#
Host species	Mouse
Conjugation	Unconjugated
Species reactivity	Human
Form	Liquid
Storage buffer	0.01M PBS, pH 7.4.
Concentration	1 mg/ml
Purity	>95% as determined by SDS-PAGE.
Clonality	Monoclonal
Isotype	IgG1, kappa
Applications	FCM
Target	DC-SIGNR, DC-SIGN2, CLEC4M, DC-SIGN-related protein, C-type lectin domain family 4 member M, CD299, L-SIGN, CD209L, Liver/lymph node-specific ICAM-3-grabbing non-integrin, CD209L1, Dendritic cell-specific ICAM-3-grabbing non-integrin 2, CD209 antigen-like protein 1
Purification	Protein A/G purified from cell culture supernatant.
Endotoxin level	Please contact with the lab for this information.
Accession	Q9H2X3

Recombinant Proteins & Antibodies

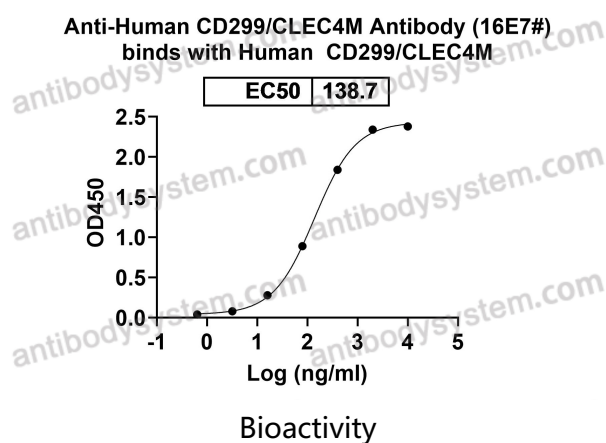
Stability and Storage

Use a manual defrost freezer and avoid repeated freeze-thaw cycles.

Store at 4°C short term (1-2 weeks). Store at -20°C 12 months. Store at -80°C long term.

Note

For research use only.

Data Image

Detects CD299/CLEC4M in indirect ELISAs.