

Anti-Human CD29/ITGB1 Antibody (K20)

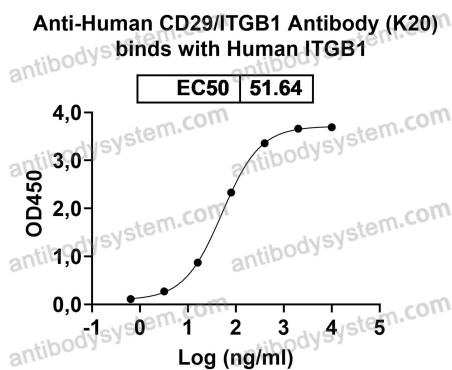
Summary

Catalog No.	FHC17610
Clone ID	K20
Host species	Mouse
Conjugation	Unconjugated
Species reactivity	Human
Form	Liquid
Storage buffer	0.01M PBS, pH 7.4.
Concentration	1 mg/ml
Purity	>95% as determined by SDS-PAGE.
Clonality	Monoclonal
Isotype	IgG1, kappa
Applications	FCM
Target	MSK12, VLA-4 subunit beta, CD29, Integrin beta-1, ITGB1, FNRB, MDF2, GPIIA, Glycoprotein IIa, Fibronectin receptor subunit beta
Purification	Protein A/G purified from cell culture supernatant.
Endotoxin level	Please contact with the lab for this information.
Accession	P05556
Stability and Storage	Use a manual defrost freezer and avoid repeated freeze-thaw cycles. Store at 4°C short term (1-2 weeks). Store at -20°C 12 months. Store at -80°C long term.

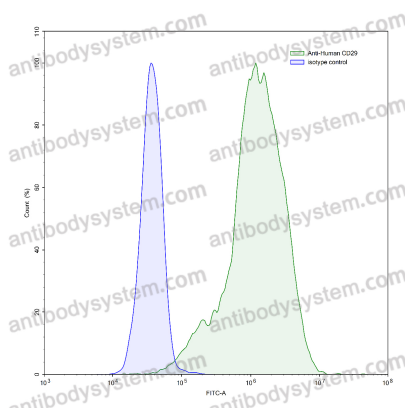
Note

For research use only.

Data Image



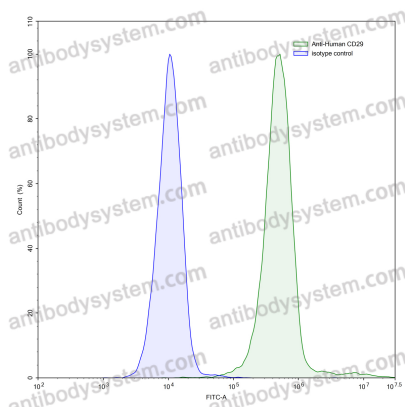
Bioactivity



Flow-cytometry

Detects Human CD29/ITGB1 in indirect ELISAs.

Flow-cytometry using anti-human CD29 antibody. HeLa cells were stained with an irrelevant antibody (Blue Histogram) or an anti-human CD29 antibody monoclonal antibody (Catalog # FHC17610, Green Histogram) at a concentration of 5 µg/ml for 30 mins at RT. After washing, bound antibody was detected using a FITC conjugated goat anti-mouse antibody (Catalog # PMB96441) and cells analysed on a NovoCyte Flow Cytometer.



Flow-cytometry

Flow-cytometry using anti-human CD29 antibody. MOLT-4 cells were stained with an irrelevant antibody (Blue Histogram) or an anti-human CD29 antibody monoclonal antibody (Catalog # FHC17610, Green Histogram) at a concentration of 5 µg/ml for 30 mins at RT. After washing, bound antibody was detected using a FITC conjugated goat anti-mouse antibody (Catalog # PMB96441) and cells analysed on a NovoCyt Flow Cytometer.