

Anti-Human CD233/SLC4A1 Antibody (C4201)

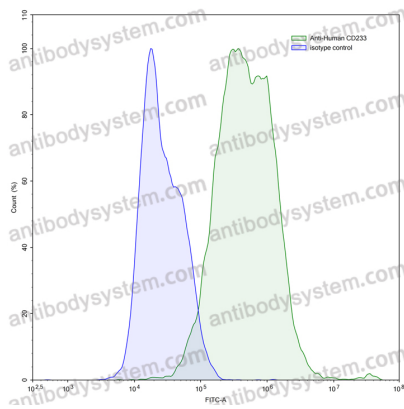
Summary

Catalog No.	FHB99810
Clone ID	C4201
Host species	Mouse
Conjugation	Unconjugated
Species reactivity	Human
Form	Liquid
Storage buffer	0.01M PBS, pH 7.4.
Concentration	1 mg/ml
Purity	>95% as determined by SDS-PAGE.
Clonality	Monoclonal
Isotype	IgG1, kappa
Applications	FCM
Target	Anion exchange protein 1, Anion exchanger 1, EPB3, CD233, Band 3 anion transport protein, AE 1, DI, AE1, SLC4A1, Solute carrier family 4 member 1
Purification	Protein A/G purified from cell culture supernatant.
Endotoxin level	Please contact with the lab for this information.
Accession	P02730
Stability and Storage	Use a manual defrost freezer and avoid repeated freeze-thaw cycles. Store at 4°C short term (1-2 weeks). Store at -20°C 12 months. Store at -80°C long term.

Note

For research use only.

Data Image



Flow-cytometry

Flow-cytometry using anti- human CD233 antibody. CD233 Transfected CHO cells were stained with an irrelevant antibody (Blue Histogram) or an anti-human CD233 antibody monoclonal antibody (Catalog # FHB99810 , Green Histogram) at a concentration of 5 µg/ml for 30 mins at RT. After washing, bound antibody was detected using a FITC conjugated goat anti-mouse antibody (Catalog # PMB96441) and cells analysed on a NovoCyte Flow Cytometer.