

Anti-Human CD221/IGF1R Antibody (2.13.2#)

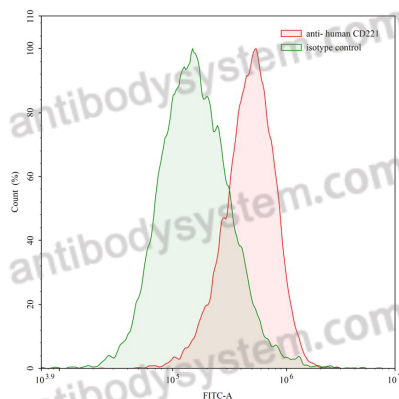
Summary

Catalog No.	FHC29920
Clone ID	2.13.2#
Host species	Human
Conjugation	Unconjugated
Species reactivity	Human
Form	Liquid
Storage buffer	0.01M PBS, pH 7.4.
Concentration	1 mg/ml
Purity	>95% as determined by SDS-PAGE.
Clonality	Monoclonal
Isotype	IgG2, kappa
Applications	FCM
Target	CD221, Insulin-like growth factor 1 receptor, IGF1R, Insulin-like growth factor I receptor, IGF-I receptor
Purification	Protein A/G purified from cell culture supernatant.
Endotoxin level	Please contact with the lab for this information.
Accession	P08069
Stability and Storage	Use a manual defrost freezer and avoid repeated freeze-thaw cycles. Store at 4°C short term (1-2 weeks). Store at -20°C 12 months. Store at -80°C long term.

Note

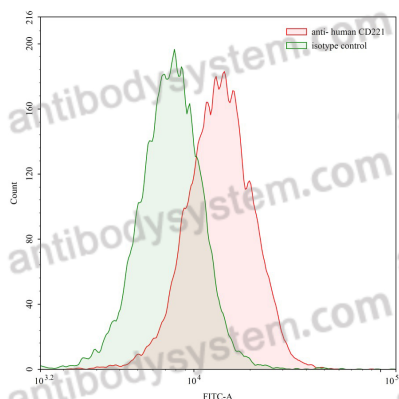
For research use only.

Data Image



Flow-cytometry

Flow-cytometry using anti- human CD221 antibody. Human HeLa cell line were stained with an irrelevant antibody (Green Histogram) or an anti-human CD221 antibody monoclonal antibody (Catalog # FHC29920 , Red Histogram) at a concentration of 20 $\mu\text{g/ml}$ for 30 mins at RT. After washing, bound antibody was detected using a FITC conjugated goat anti-human antibody (Catalog # PHB96441) and cells analysed on a NovoCyte Flow Cytometer.



Flow-cytometry

Flow-cytometry using anti- human CD221 antibody. Human Jurkat cell line were stained with an irrelevant antibody (Green Histogram) or an anti-human CD221 antibody monoclonal antibody (Catalog # FHC29920 , Red Histogram) at a concentration of 5 $\mu\text{g/ml}$ for 30 mins at RT. After washing, bound antibody was detected using a FITC conjugated goat anti-human antibody (Catalog # PHB96441) and cells analysed on a NovoCyte Flow Cytometer.