

# Anti-Human CD20/MS4A1 Antibody (SAA0007)

## Summary

---

<b>Catalog No.</b>	FHC90720
<b>Clone ID</b>	SAA0007
<b>Host species</b>	Mouse
<b>Conjugation</b>	Unconjugated
<b>Species reactivity</b>	Human
<b>Form</b>	Liquid
<b>Storage buffer</b>	0.01M PBS, pH 7.4.
<b>Concentration</b>	1 mg/ml
<b>Purity</b>	>95% as determined by SDS-PAGE.
<b>Clonality</b>	Monoclonal
<b>Isotype</b>	IgG2b, kappa
<b>Applications</b>	FCM
<b>Target</b>	B-lymphocyte surface antigen B1, Membrane-spanning 4-domains subfamily A member 1, MS4A1, Leukocyte surface antigen Leu-16, B-lymphocyte antigen CD20, Bp35, CD20
<b>Purification</b>	Protein A/G purified from cell culture supernatant.
<b>Endotoxin level</b>	Please contact with the lab for this information.
<b>Accession</b>	P11836

### Stability and Storage

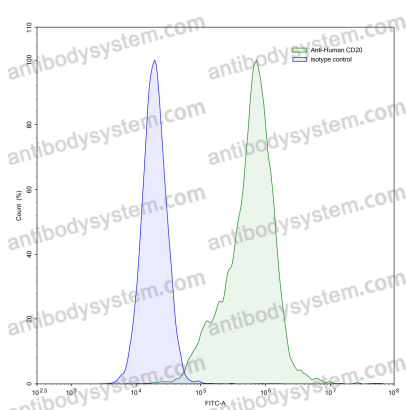
Use a manual defrost freezer and avoid repeated freeze-thaw cycles.

Store at 4°C short term (1-2 weeks). Store at -20°C 12 months. Store at -80°C long term.

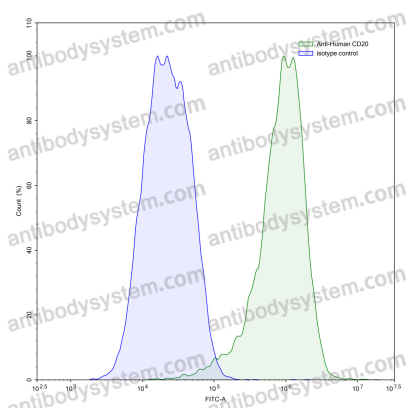
### Note

For research use only.

## Data Image



Flow-cytometry



Flow-cytometry

Flow-cytometry using anti-human CD20 antibody. CD20 Transfected CHO cells were stained with an irrelevant antibody (Blue Histogram) or an anti-human CD20 antibody monoclonal antibody (Catalog # FHC90720, Green Histogram) at a concentration of 5 µg/ml for 30 mins at RT. After washing, bound antibody was detected using a FITC conjugated goat anti-mouse antibody (Catalog # PMB96441) and cells analysed on a NovoCyt Flow Cytometer.

Flow-cytometry using anti-human CD20 antibody. Daudi cells were stained with an irrelevant antibody (Blue Histogram) or an anti-human CD20 antibody monoclonal antibody (Catalog # FHC90720, Green Histogram) at a concentration of 5 µg/ml for 30 mins at RT. After washing, bound antibody was detected using a FITC conjugated goat anti-mouse antibody (Catalog # PMB96441) and cells analysed on a NovoCyt Flow Cytometer.