

Anti-Human CD2 Antibody (G11)

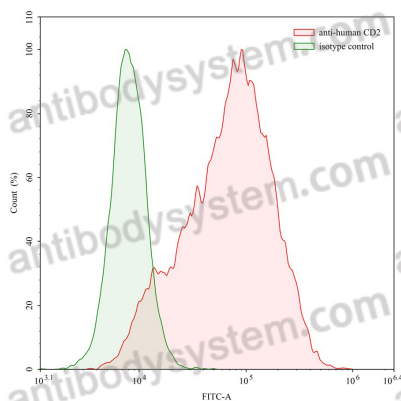
Summary

Catalog No.	FHC20810
Clone ID	G11
Host species	Mouse
Conjugation	Unconjugated
Species reactivity	Human
Form	Liquid
Storage buffer	0.01M PBS, pH 7.4.
Concentration	1 mg/ml
Purity	>95% as determined by SDS-PAGE.
Clonality	Monoclonal
Isotype	IgG2a, kappa
Applications	FCM
Target	Erythrocyte receptor, SRBC, T-cell surface antigen CD2, Rosette receptor, CD2, LFA-3 receptor, T-cell surface antigen T11/Leu-5, LFA-2
Purification	Protein A/G purified from cell culture supernatant.
Endotoxin level	Please contact with the lab for this information.
Accession	P06729
Stability and Storage	Use a manual defrost freezer and avoid repeated freeze-thaw cycles. Store at 4°C short term (1-2 weeks). Store at -20°C 12 months. Store at -80°C long term.

Note

For research use only.

Data Image

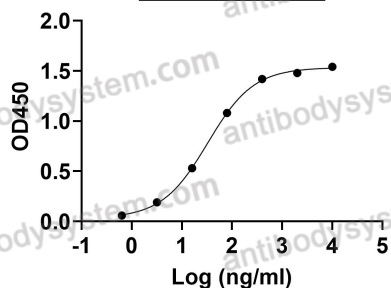


Flow-cytometry

Flow-cytometry using anti- human CD2 antibody. Human Jurkat cell line were stained with an irrelevant antibody (Green Histogram) or an anti-human CD2 antibody monoclonal antibody (Catalog # FHC20810 , Red Histogram) at a concentration of 20 µg/ml for 30 mins at RT. After washing, bound antibody was detected using a FITC conjugated goat anti-mouse antibody (Catalog # PMB96441) and cells analysed on a NovoCyt Flow Cytometer.

Anti-Human CD2 Antibody (G11)
binds with CD2

EC50	32.95
------	-------



Bioactivity

Detects CD2 in indirect ELISAs.