

Anti-Human CD1a Antibody (2113)

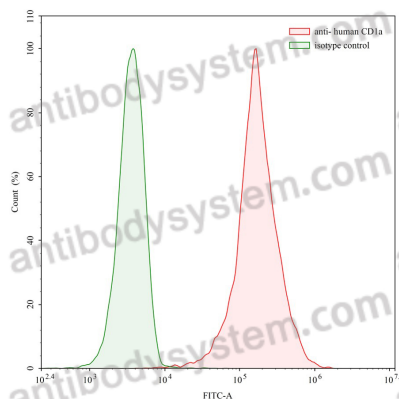
Summary

Catalog No.	FHC18710
Clone ID	2113
Host species	Mouse
Conjugation	Unconjugated
Species reactivity	Human
Form	Liquid
Storage buffer	0.01M PBS, pH 7.4.
Concentration	1 mg/ml
Purity	>95% as determined by SDS-PAGE.
Clonality	Monoclonal
Isotype	IgG1, kappa
Applications	FCM
Target	T-cell surface glycoprotein CD1a, CD1A, T-cell surface antigen T6/Leu-6, CD1a, hTa1 thymocyte antigen
Purification	Protein A/G purified from cell culture supernatant.
Endotoxin level	Please contact with the lab for this information.
Accession	P06126
Stability and Storage	Use a manual defrost freezer and avoid repeated freeze-thaw cycles. Store at 4°C short term (1-2 weeks). Store at -20°C 12 months. Store at -80°C long term.

Note

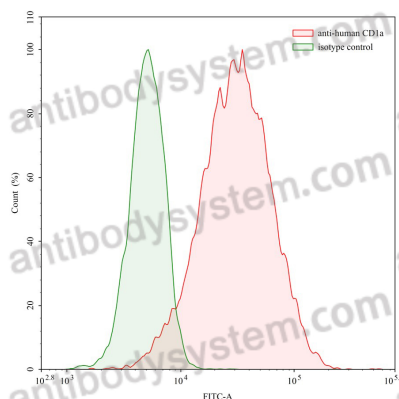
For research use only.

Data Image



Flow-cytometry

Flow-cytometry using anti- human CD1a antibody. Human MOLT-4 cell line were stained with an irrelevant antibody (Green Histogram) or an anti-human CD1a antibody monoclonal antibody (Catalog # FHC18710 , Red Histogram) at a concentration of 5 µg/ml for 30 mins at RT. After washing, bound antibody was detected using a FITC conjugated goat anti-mouse antibody (Catalog # PMB96441) and cells analysed on a NovoCyte Flow Cytometer.



Flow-cytometry

Flow-cytometry using anti- human CD1a antibody. Human Jurkat cell line were stained with an irrelevant antibody (Green Histogram) or an anti-human CD1a antibody monoclonal antibody (Catalog # FHC18710 , Red Histogram) at a concentration of 20µg/ml for 30 mins at RT. After washing, bound antibody was detected using a FITC conjugated goat anti-mouse antibody (Catalog # PMB96441) and cells analysed on a NovoCyte Flow Cytometer.