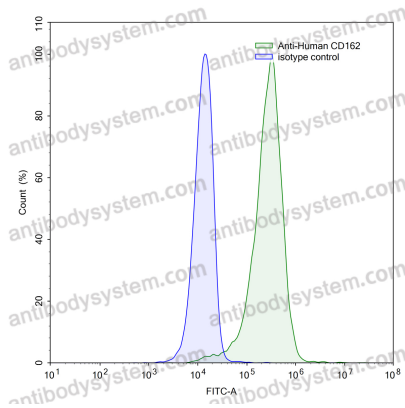


Anti-Human CD162/SELPLG Antibody (SAA0065)

Summary

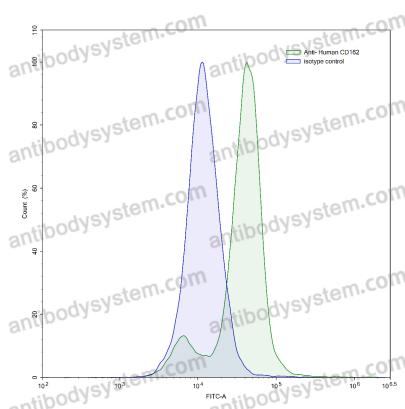
Catalog No.	FHG76510
Clone ID	SAA0065
Host species	Human
Conjugation	Unconjugated
Species reactivity	Human
Form	Liquid
Storage buffer	0.01M PBS, pH 7.4.
Concentration	1 mg/ml
Purity	>95% as determined by SDS-PAGE.
Clonality	Monoclonal
Isotype	IgG1, kappa
Applications	ELISA, FCM
Target	Selectin P ligand, PSGL-1, SELPLG, CD162, P-selectin glycoprotein ligand 1
Purification	Protein A/G purified from cell culture supernatant.
Endotoxin level	Please contact with the lab for this information.
Accession	Q14242
Stability and Storage	Use a manual defrost freezer and avoid repeated freeze-thaw cycles. Store at 4°C short term (1-2 weeks). Store at -20°C 12 months. Store at -80°C long term.
Note	For research use only.

Data Image



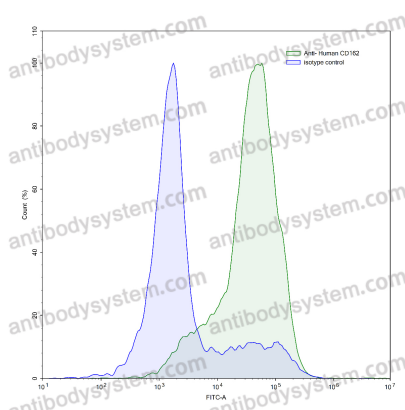
Flow-cytometry

Flow-cytometry using anti-human CD162 antibody. Jurkat cells were stained with an irrelevant antibody (Blue Histogram) or an anti-human CD162 antibody monoclonal antibody (Catalog # FHG76510, Green Histogram) at a concentration of 5 µg/ml for 30 mins at RT. After washing, bound antibody was detected using a FITC conjugated goat anti-human antibody (Catalog # PHB96441) and cells analysed on a NovoCyte Flow Cytometer.



Flow-cytometry

Flow-cytometry using anti-human CD162 antibody. Human peripheral blood lymphocytes were stained with an irrelevant antibody (Blue Histogram) or an anti-human CD162 antibody monoclonal antibody (Catalog # FHG76510, Green Histogram) at a concentration of 5 µg/ml for 30 mins at RT. After washing, bound antibody was detected using a FITC conjugated goat anti-human antibody (Catalog # PHB96441) and cells analysed on a NovoCyte Flow Cytometer.



Flow-cytometry

Flow-cytometry using anti-human CD162 antibody. Human peripheral blood lymphocytes were stained with an irrelevant antibody (Blue Histogram) or an anti-human CD162 antibody monoclonal antibody (Catalog # FHG76510, Green Histogram) at a concentration of 5 µg/ml for 30 mins at RT. After washing, bound antibody was detected using a FITC conjugated goat anti-human antibody (Catalog # PHB96441) and cells analysed on a NovoCyte Flow Cytometer.